

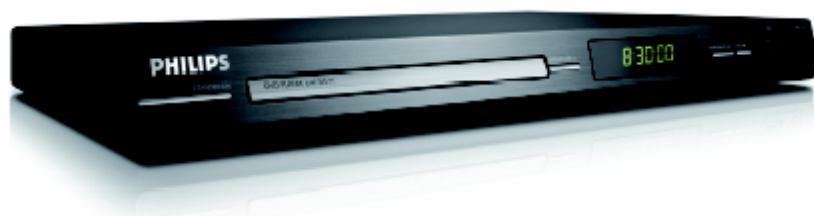
DVD Player

DVP3250K

Service

DVP3250K/55

Service



Service

Service Manual

TABLE OF CONTENTS

| | Page |
|--|------|
| . Technical Specifications..... | 1-2 |
| . Safety Instruction, Warning & Notes..... | 1-3 |
| . DFU Instruction..... | 2-1 |
| . Mechanical and Dismantling Instructions..... | 3-1 |
| . Software Version & Upgrades, Region Code Change..... | 4-1 |
| . Trouble Shooting Chart..... | 5-1 |
| . Wiring Diagram..... | 6-1 |
| . Electrical Diagrams and Print-layouts..... | 7-1 |
| . Set Mechanical Exploded view & Part list..... | 8-1 |
| . Revision List..... | 9-1 |

©Copyright 2008 Philips Consumer Electronics B.V. Eindhoven, The Netherlands
All rights reserved. No part of this publication may be reproduced, stored in a retrieval system or transmitted, in any form or by any means, electronic, mechanical, photocopying, or otherwise without the prior permission of Philips.

**CLASS 1
LASER PRODUCT**

Published by EN-0903 BU AVM Printed in The Netherlands Subject to modification

GB 3139 785 34761

Version 1.1

PHILIPS

Specifications

TV STANDARD

| | (PAL/50Hz) | (NTSC/60Hz) |
|-----------------|--------------------------|-------------|
| Number of lines | 625 | 525 |
| Playback | Multistandard (PAL/NTSC) | |

VIDEO PERFORMANCE

| | |
|--------------|------------------|
| Video DAC | 12 bit, 108 MHz |
| Y Pb Pr | 0.7 Vpp ~ 75 ohm |
| Video Output | 1 Vpp ~ 75 ohm |

VIDEO FORMAT

| | |
|---------------------|---|
| Digital Compression | MPEG 2 for DVD, SVCD MPEG 1 for VCD DivX® |
|---------------------|---|

| | 50 Hz | 60 Hz |
|-----------------------|------------|------------|
| DVD Horiz. resolution | 720 pixels | 720 pixels |
| Vertical resolution | 576 lines | 480 lines |

| | 50 Hz | 60 Hz |
|-----------------------|------------|------------|
| VCD Horiz. resolution | 352 pixels | 352 pixels |
| Vertical resolution | 288 lines | 240 lines |

AUDIO FORMAT

| | | |
|---------|--------------------|--|
| Digital | MPEG/ AC-3/ PCM | compressed Digital 16, 20, 24 bits fs, 44.1, 48, 96 kHz |
| | MP3 (ISO 9660) | 96, 112, 128, 256 kbps & variable bit rate fs, 32, 44.1, 48 kHz |

Analog Sound Stereo
Dolby Surround compatible downmix from Dolby
Digital multi-channel sound

AUDIO PERFORMANCE

| | |
|-------------------------|--|
| DA Converter | 24 bit, 192 kHz |
| DVD | fs 96 kHz 4 Hz - 44 kHz fs 48 kHz 4 Hz - 22 kHz |
| SVCD | fs 48 kHz 4 Hz - 22 kHz fs 44.1 kHz 4 Hz - 20 kHz |
| CD/VCD | fs 44.1 kHz 4 Hz - 20 kHz |
| Signal-Noise (1kHz) | > 90 dB |
| Dynamic range(1kHz) | > 80 dB |
| Crosstalk (1kHz) | > 70 dB |
| Distortion/noise (1kHz) | > 65 dB |
| MPEG MP3 | MPEG Audio L3 |

CONNECTIONS

| | |
|-------------------|--|
| Y Pb Pr Output | Cinch 3x |
| Video Output | Cinch (yellow) |
| Audio Output(L+R) | Cinch (white/red) |
| Digital Output | 1 coaxial IEC60958 for CDDA / LPCM IEC61937 for MPEG 1/2, Dolby Digital |

CABINET

| | |
|------------------------|-----------------------|
| Dimensions (w x h x d) | 360 x 37x 209 mm |
| Weight | Approximately 2 kg |

POWER CONSUMPTION

| | |
|--------------------------------------|----------------------------|
| Power Supply Rating | 110 V – 240 V; 50/60 Hz |
| Power consumption | < 10 W |
| Power consumption in Standby mode | < 1 W |

Specifications are subject to change without prior notice.

Safety instruction, Warning & Notes

Safety instruction

1. General safety

Safety regulations require that during a repair:

- . Connect the unit to the mains via an isolation transformer.
- . Replace safety components indicated by the symbol ▲, only by components identical to the original ones. Any other component substitution (other than original type) may increase risk of fire or electrical shock hazard.

Safety regulations require that after a repair, you must return the unit in its original condition. Pay, in particular, attention to the following points:

- . Route the wires/cables correctly, and fix them with the mounted cable clamps.
- . Check the insulation of the mains lead for external damage.
- . Check the electrical DC resistance between the mains plug and the secondary side:
 - 1) Unplug the mains cord, and connect a wire between the two pins of the mains plug.
 - 2) Set the mains switch the "on" position (keep the mains cord unplug).
 - 3) Measure the resistance value between the mains plug and the front panel, controls, and chassis bottom.
 - 4) Repair or correct unit when the resistance measurement is less than 1M Ω .
 - 5) Verify this, before you return the unit to the customer/user (ref. UL-standard no. 1492).
 - 6) Switch the unit "off", and remove the wire between the two pins of the mains plug.

2. Laser safety

This unit employs a laser. Only qualified service personnel may remove the cover, or attempt to service this device (due to possible eye injury).

Laser device unit

Type : Semiconductor laser GaAlAs

Wavelength : 650nm (DVD)

: 780nm (VCD/CD)

Output power : 7mW (DVD)

: 10mW (DVD /CD)

Beam divergence: 60 degree

Note: Use of controls or adjustments or performance of procedure other than those specified herein, may result in hazardous radiation exposure. Avoid direct exposure to beam.

Warning

1. General

. All ICs and many other semiconductors are susceptible to electrostatic discharges (ESD). Careless handling during repair can reduce life drastically. Make sure that, during repair, you are at the same potential as the mass of the set by a wristband with resistance. Keep components and tools at this same potential. Available ESD protection equipment:

- 1) Complete kit ESD3 (small tablemat, wristband, connection box, extension cable and earth cable) 4822 310 10671.
- 2) Wristband tester 4822 344 13999.

. Be careful during measurements in the live voltage section. The primary side of the power supply, including the heat sink, carries live mains voltage when you connect the player to the mains (even when the player is "off"!). It is possible to touch copper tracks and/or components in this unshielded primary area, when you service the player. Service personnel must take precautions to prevent touching this area or components in this area. A "lighting stroke" and a stripe-marked printing on the printed wiring board, indicate the primary side of the power supply.

. Never replace modules, or components, while the unit is "on".

2. Laser

- . The use of optical instruments with this product, will increase eye hazard.
- . Only qualified service personnel may remove the cover or attempt to service this device, due to possible eye injury.
- . Repair handling should take place as much as possible with a disc loaded inside the player.
- . Text below is placed inside the unit, on the laser cover shield:


CAUTION: VISIBLE AND INVISIBLE LASER RADIATION WHEN OPEN, AVOID EXPOSURE TO BEAM.

Notes: Manufactured under licence from Dolby Laboratories. The double-D symbol is trademarks of Dolby Laboratories, Inc. All rights reserved.

Notes

Lead-Free requirement for service

IDENTIFICATION:

Regardless of special logo (not always indicated) 

One must treat all sets from 1.1.2005 onwards, according next rules.

Important note: In fact also products a little older can also be treated in this way as long as you avoid mixing solder-alloys (leaded/ lead-free). So best to always use SAC305 and the higher temperatures belong to this.

Due to lead-free technology some rules have to be respected by the workshop during a repair:

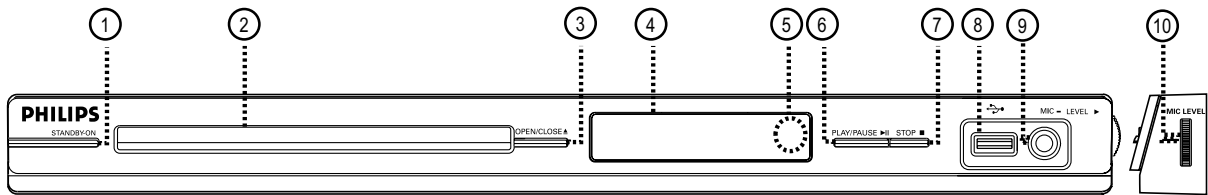
- Use only lead-free solder alloy Philips SAC305 with order code 0622 149 00106. If lead-free solder-paste is required, please contact the manufacturer of your solder-equipment. In general use of solder-paste within workshops should be avoided because paste is not easy to store and to handle.
 - Use only adequate solder tools applicable for lead-free solder alloy. The solder tool must be able
 - To reach at least a solder-temperature of 400°C,
 - To stabilize the adjusted temperature at the solder-tip
 - To exchange solder-tips for different applications.
 - Adjust your solder tool so that a temperature around 360°C – 380°C is reached and stabilized at the solder joint. Heating-time of the solder-joint should not exceed ~ 4 sec. Avoid temperatures above 400°C otherwise wear-out of tips will rise drastically and flux-fluid will be destroyed. To avoid wear-out of tips switch off un-used equipment, or reduce heat.
 - Mix of lead-free solder alloy / parts with leaded solder alloy / parts is possible but PHILIPS recommends strongly to avoid mixed solder alloy types (leaded and lead-free). If one cannot avoid, clean carefully the solder-joint from old solder alloy and re-solder with new solder alloy (SAC305).
- Use only original spare-parts listed in the Service-Manuals. Not listed standard-material (commodities) has to be purchased at external companies.
 - Special information for BGA-ICs:
 - always use the 12nc-recognizable soldering temperature profile of the specific BGA (for de-soldering always use highest lead-free temperature profile, in case of doubt)
 - lead free BGA-ICs will be delivered in so-called 'dry-packaging' (sealed pack including a silica gel pack) to protect the IC against moisture. After opening, dependent of MSL-level seen on indicator-label in the bag, the BGA-IC possibly still has to be baked dry. This will be communicated via AYS-website.
 - Do not re-use BGAs at all.
 - For sets produced before 1.1.2005, containing leaded soldering-tin and components, all needed spare-parts will be available till the end of the service-period. For repair of such sets nothing changes.
 - On our website:
 - www.atyourservice.ce.Philips.com**

You find more information to:

BGA-de-/soldering (+ baking instructions)
 Heating-profiles of BGAs and other ICs used in Philips-sets

You will find this and more technical information within the "magazine", chapter "workshop news".
 For additional questions please contact your local repair-helpdesk.

DVD Player Instruction



① **STANDBY-ON**

- Turns on this unit or turns off to normal standby mode.

② **Disc tray**

③ **OPEN/CLOSE ▲**

- Opens/closes the disc tray.

④ **Display panel**

- Shows information about the current status of the unit.

⑤ **IR Sensor**

- Point the remote control towards this sensor.

⑥ **PLAY/PAUSE ►||**

- Starts/pauses playback.

⑦ **STOP ■**

- Stops playback.

⑧ **↔ (USB) jack**

- Input for USB flash drive or digital camera.

* Not all brands and models of digital cameras are supported.

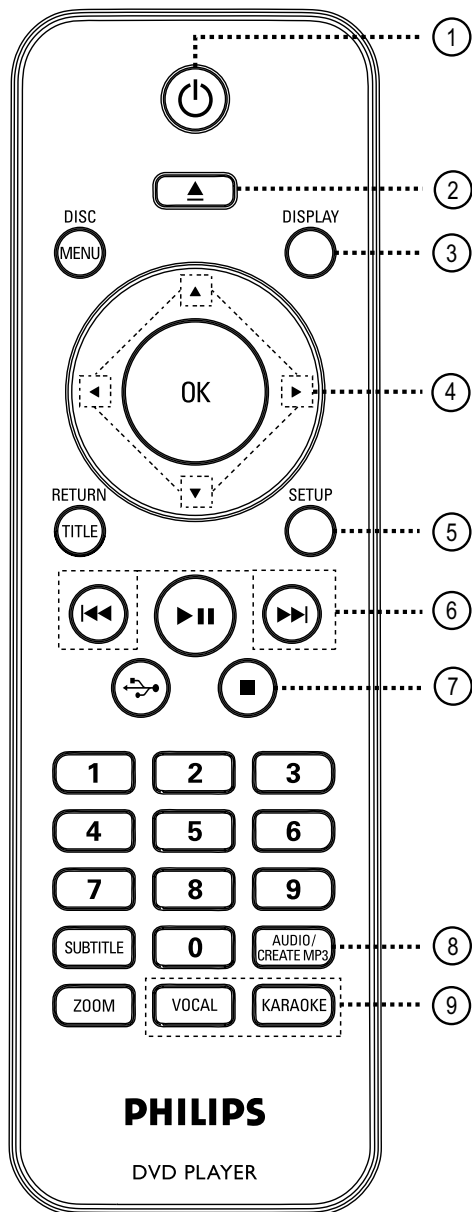
⑨ **MIC**

- For microphone connection.

⑩ **MIC LEVEL**

- Microphone volume control.

Remote Control Instruction



① **⏻** (Standby-On)
 – Turns on this unit or turns off to normal standby mode.

② **⏮** (Open/Close)
 – Opens/closes the disc tray.

③ **DISPLAY**
 – Displays the current status or disc information.

④ **▲▼◀▶**
 – **▲▼**: Cursor buttons for moving up/down or press up/down for a slow backward or forward search.
 – **◀▶**: Cursor buttons for moving to the left/right or press left/right for fast backward or forward search.

⑤ **SETUP**
 – Enters or exits the disc setup menu.

⑥ **◀◀ / ▶▶** (Previous/Next)
 – Skips to the previous or next title/chapter/track.
 – Press and hold this button for fast backward or forward search.

⑦ **■** (Stop)
 – Stops playback.

⑧ **AUDIO/CREATE MP3**
 – Selects an audio language or channel.
 – Access create MP3 menu.

⑨ **VOCAL**
 – Choose audio channel or karaoke method.

KARAOKE

– Toggles between 'MIC', 'Vol', 'Echo', 'Key' or 'Karaoke Scoring'.

Remote Control Instruction (continued)

⑩ DISC MENU

- Enters or exits disc contents menu.
- For VCD 2.0 and SVCD, turns on or off the playback control mode.

⑪ OK

- Confirms an entry or selection.

⑫ RETURN/TITLE

- Returns to the previous menu or shows title menu

⑬ ►|| (Play/Pause)

- Starts or pauses playback.

⑭ (USB)

- Switches to USB mode and shows the content of the USB device.

⑮ Numeric keypad 0-9

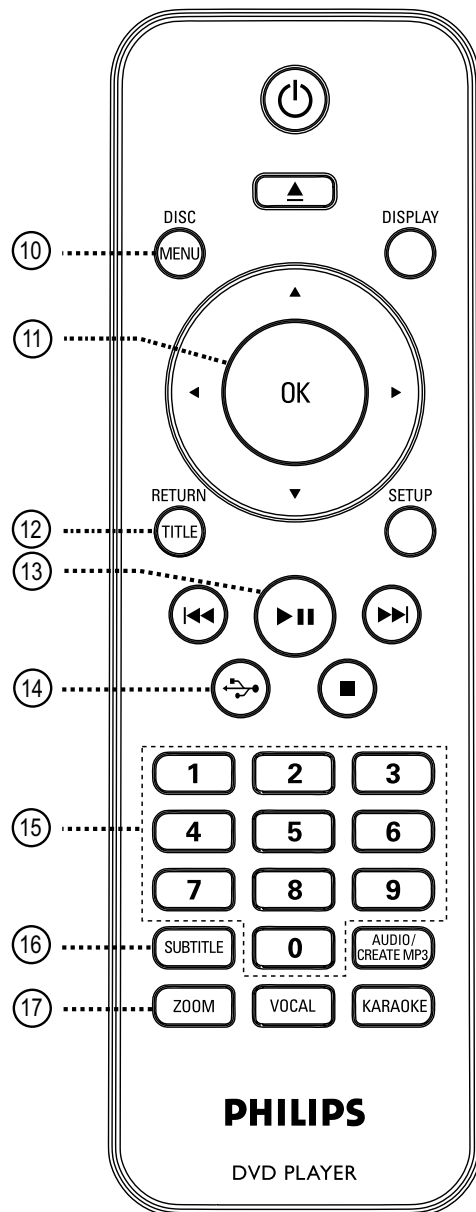
- Selects a track or title number of the disc.

⑯ SUBTITLE

- Selects a DVD subtitle language.

⑰ ZOOM

- Zoom the picture on the TV.



Mechanical and Dismantling Instructions

Dismantling Instruction

The following guidelines show how to dismantle the player.

Step1: Remove 5 screws around the Top Cover, and then remove the Top Cover (Figure 1).

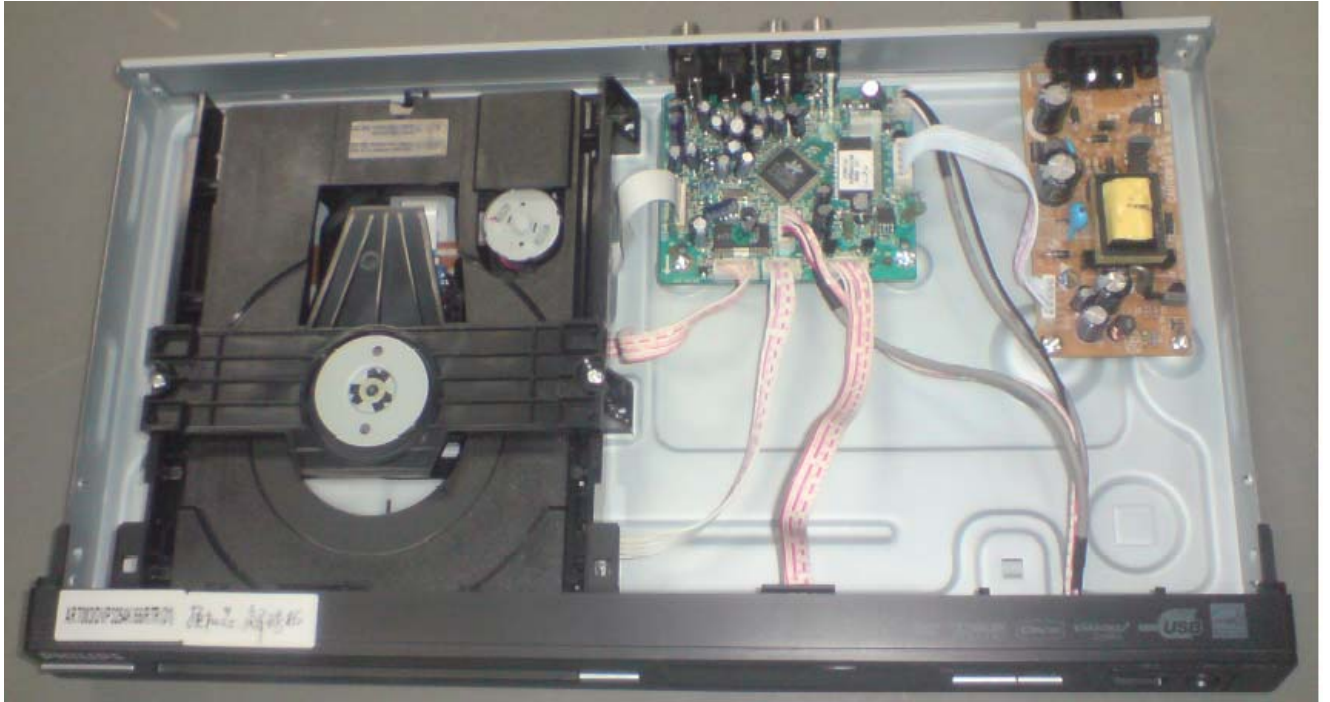
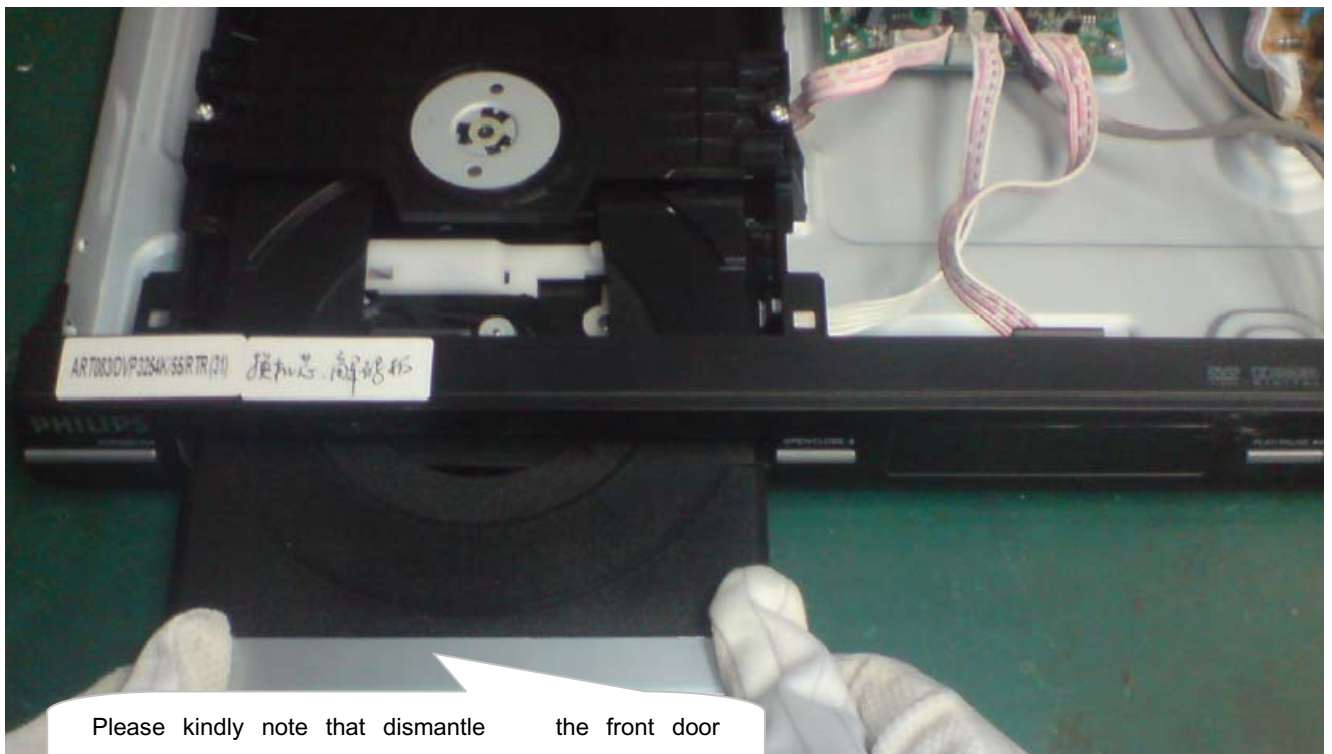


Figure 1

Step2: If it is necessary to dismantle Loader or Front Panel, the Front door should be removed first. (Figure 2)

Note: Make sure to operate gently otherwise the guider would be damaged.



Please kindly note that dismantle the front door assembly carefully to avoid damage tray and the front door.

Figure 2

Mechanical and Dismantling Instructions

Dismantling Instruction

Step3: If the tray can't open in normal way, you can make it through the instruction as below (Figure 3).
Note: Make sure to operate gently otherwise the guider would be damaged.



Figure 3

Step4: Dismantling Front Panel, disconnect the connectors (XP5, XP6, XP7), then release the snaps on the both sides of Front Panel and bottom cabinet , then gently pull the Panel out from the set. (Figure 4 & 5)

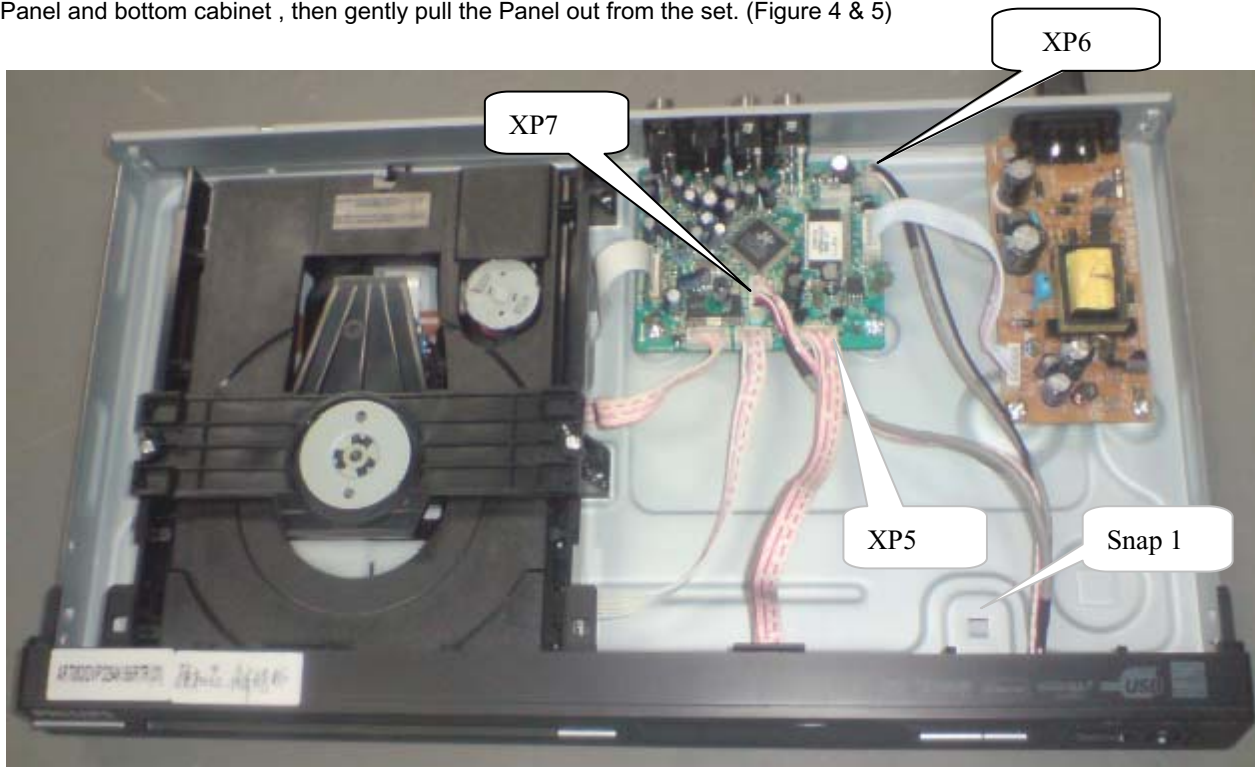


Figure 4

Mechanical and Dismantling Instructions

Dismantling Instruction

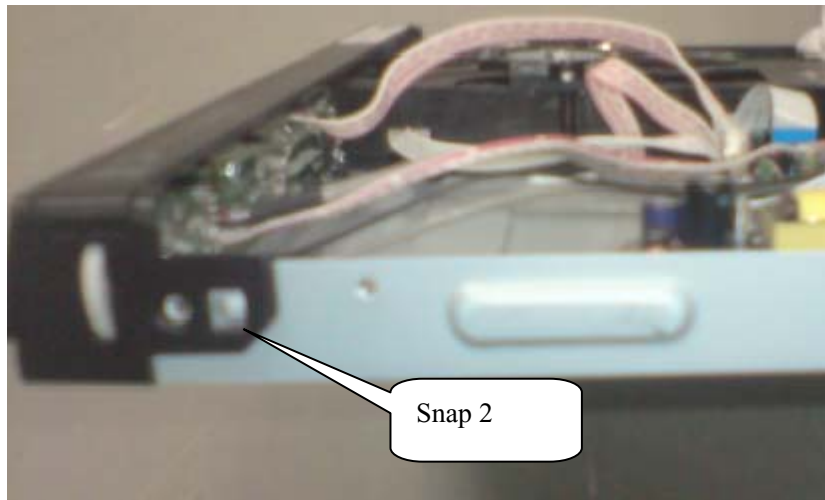


Figure 5

Step5: Dismantling Loader, disconnect the 3 connectors (XP2, XP3, XP4) aiming in the below figure, and remove 1 screw that connects the loader and the bottom cabinet. (Figure 6)

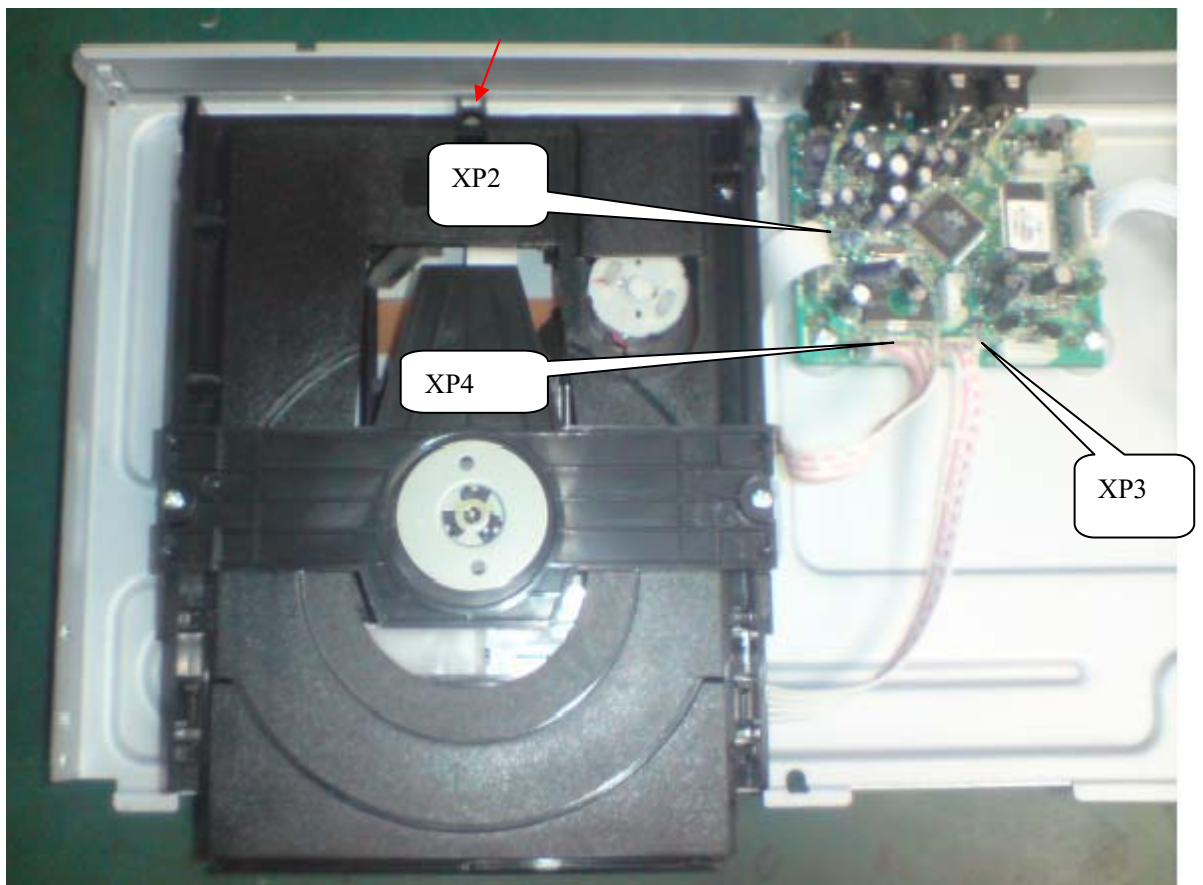


Figure 6

Mechanical and Dismantling Instructions

Dismantling Instruction

Step6: Dismantling Main Board, first disconnect the connector (XP1), and then remove 4screws. (Figure 7)

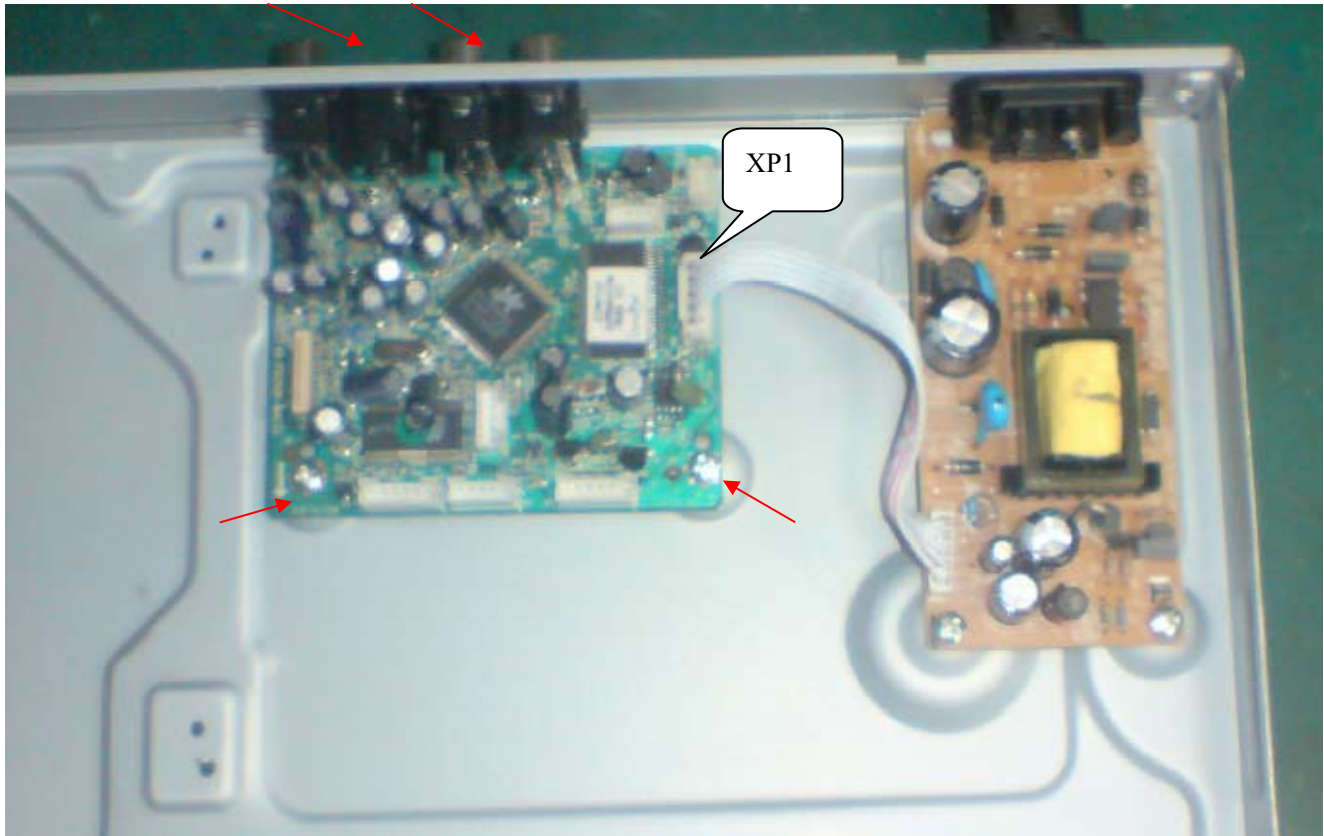


Figure 7

Step7: Remove the 4 screws on Power Board to dismantle the Power Board. (Figure 8)



Figure 8

Software upgrade

Preparation to upgrade software

- 1) Start the CD Burning software and create a new CD project (Data Disc) with the following setting:
Label: DVP3XXX (No need the label name)
File Name: DVPXXXX_XX.BIN
Power on the set and open the tray, then press <5><5> to check the File Name.

Note: It is required capital letter for the File System name.

- 2) Burn the data onto a blank CDR

A. Procedure for software upgrade:

- 1) Power on the set and insert the prepared Upgrade CDR.
- 2) The set will starts reading disc & response with the following display TV screen:
Upgrade File DETECTED
Upgrade?
Press Play TO START.
- 3) Press <OK> button to confirm, then screen will display :
Files coping...
UPGRADING...
- 4) The upgraded tray will automatically open when files coping complete, then take out the disc.
- 5) About 1 minute later, the trace will automatically close when upgrading complete.

B. Read out the software versions to confirm upgrading

- 1) Power on the set and press <Setup> button on the remote control.
- 2) Press <1><3><7><9> button.
The software version and other information are display on the TV screen as follows:

| | |
|-------------|--|
| Version | XX.XX.XX.XX (Main version) |
| SUB-VER | XX.XX.XX.XX (software version of application software) |
| 8032 | XX.XX.XX.XX |
| Servo | XX.XX.XX.XX (software version of Servo) |
| RISC | XX.XX.XX.XX |
| DSP | XX.XX.XX.XX |
| Region Code | X 4 |

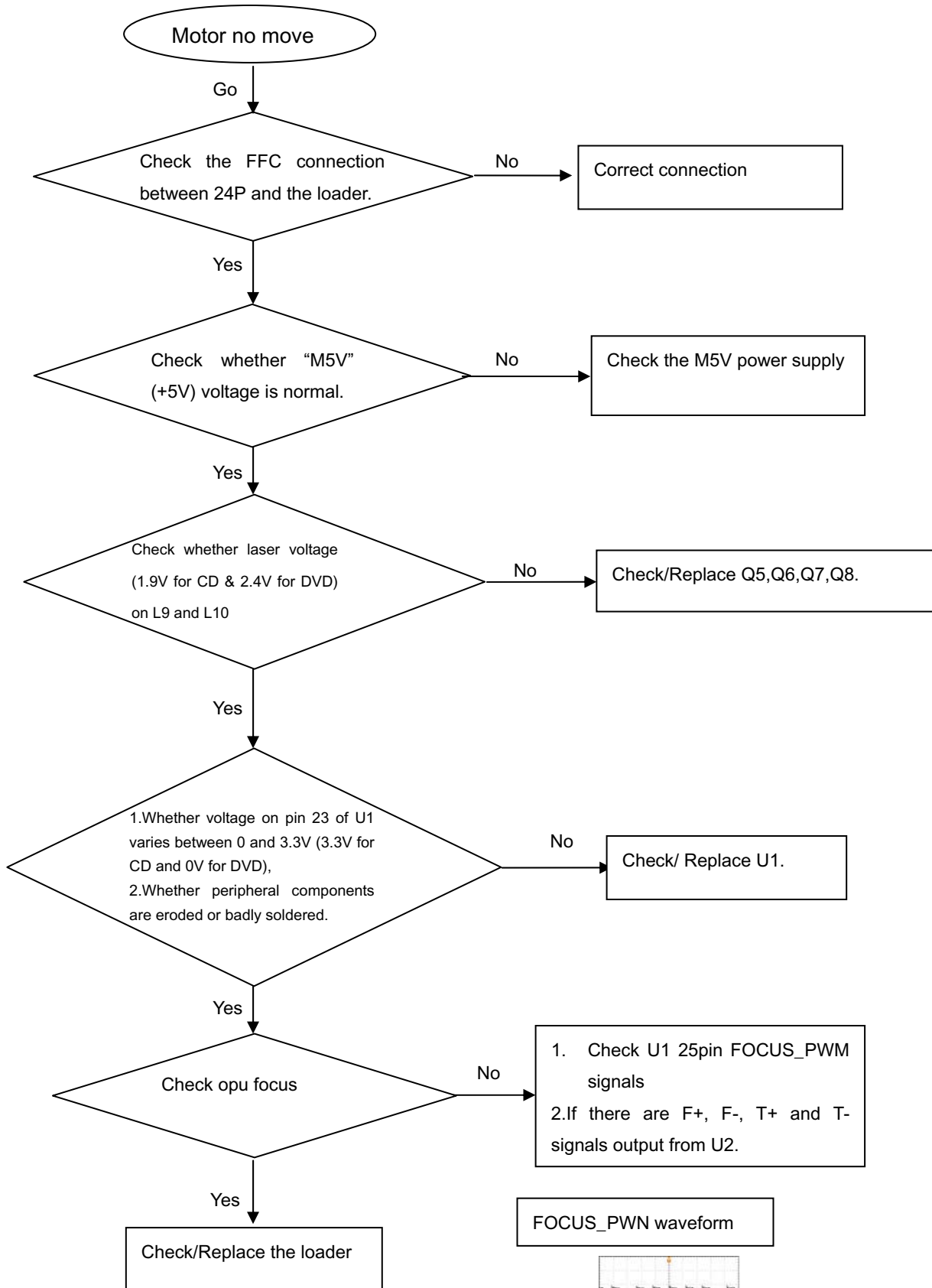
Caution: The set must not be power off during upgrading, Otherwise the Main board will be damaged entirely.

Region Code Change

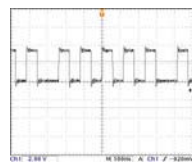
- 1) Power on the set and open the tray door;
- 2) Press the "Setup" button on the remote control, then the setup interface should be displayed on the TV screen;
- 3) Move the right cursors of the remote control to choose the "Reference" and press "1" "3" "8" "9" "3" "1" on the remote control;
- 4) Then move the up or down cursors to choose the region code.

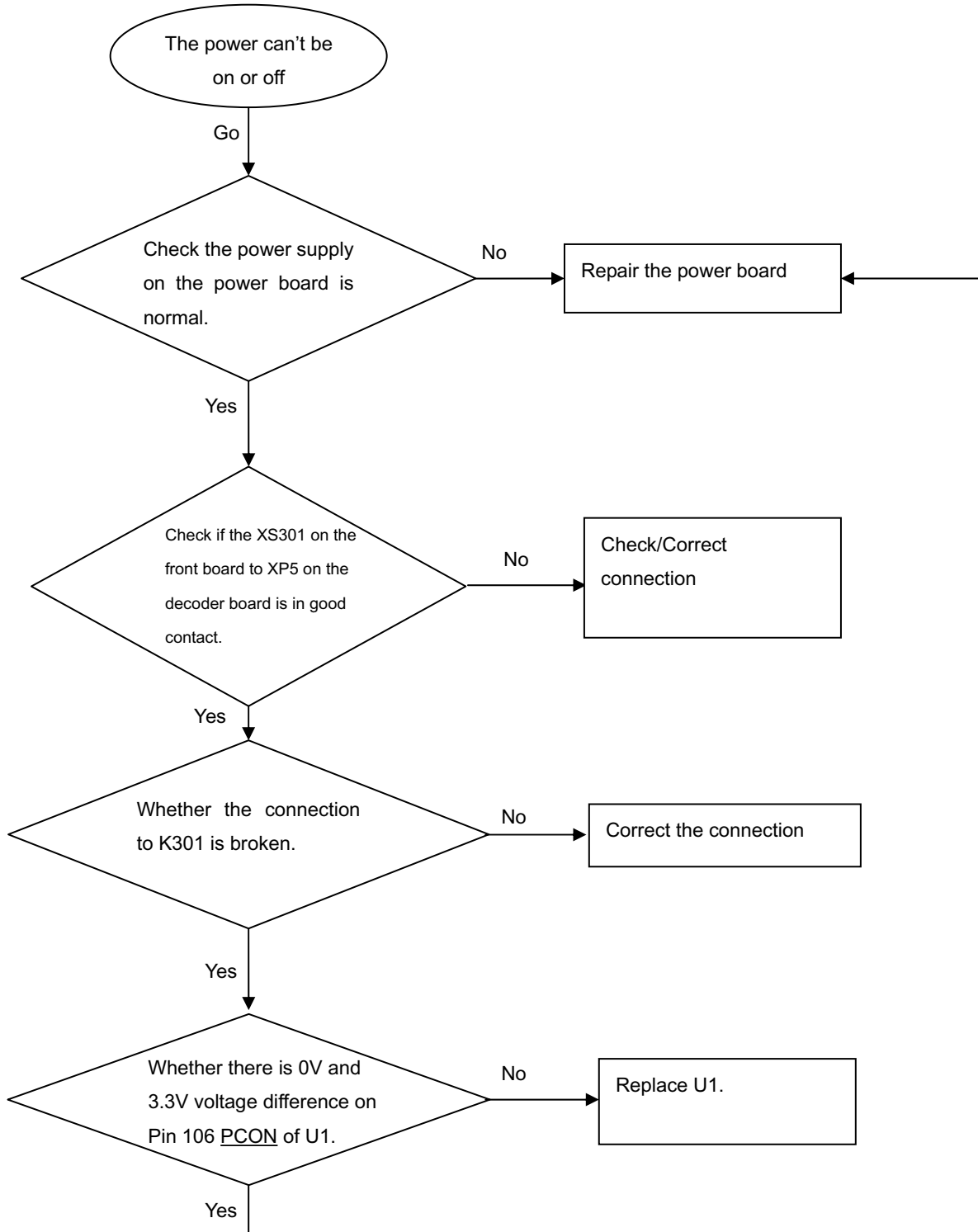
Note: restart after above steps.

Spindle motor does not move

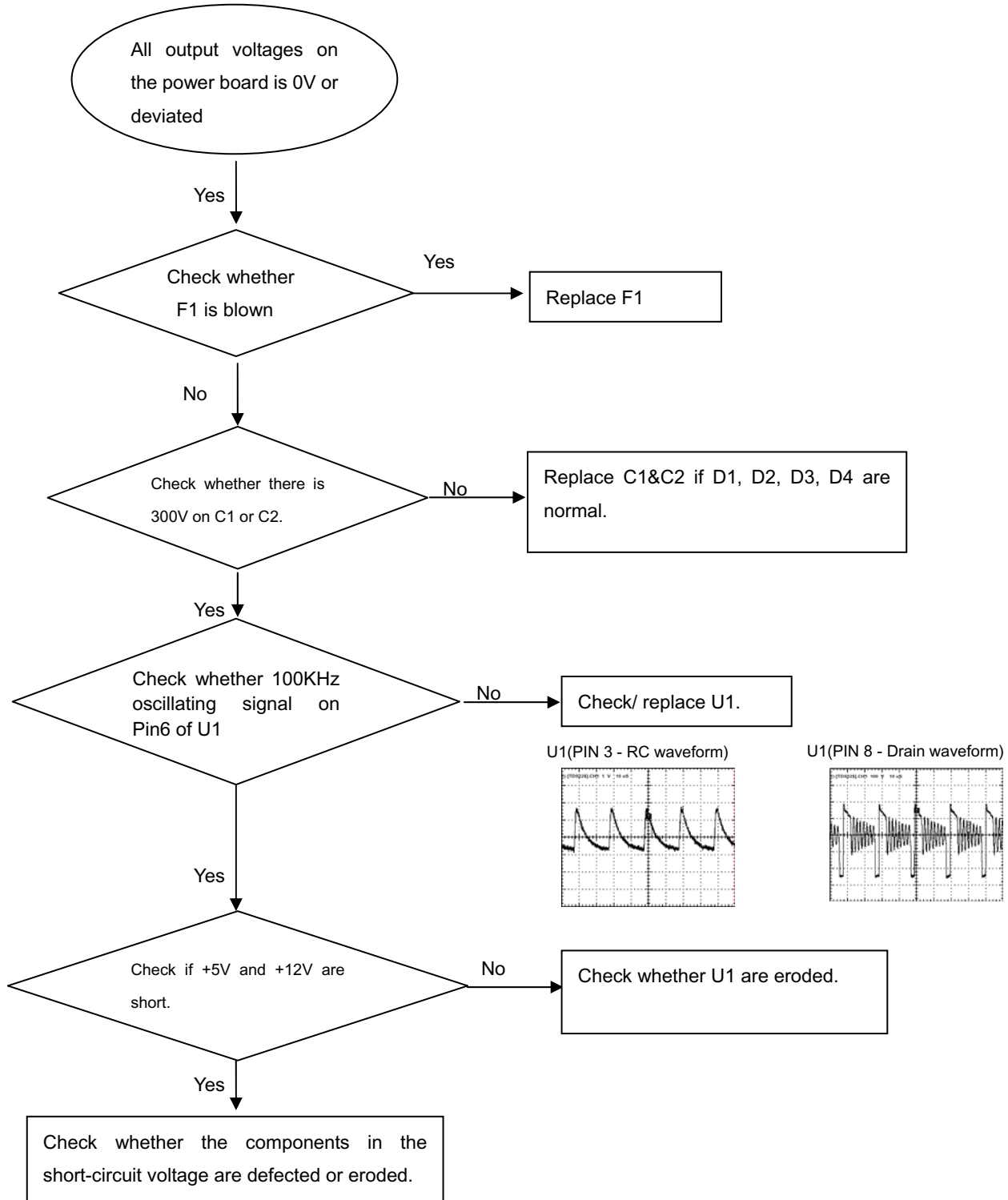


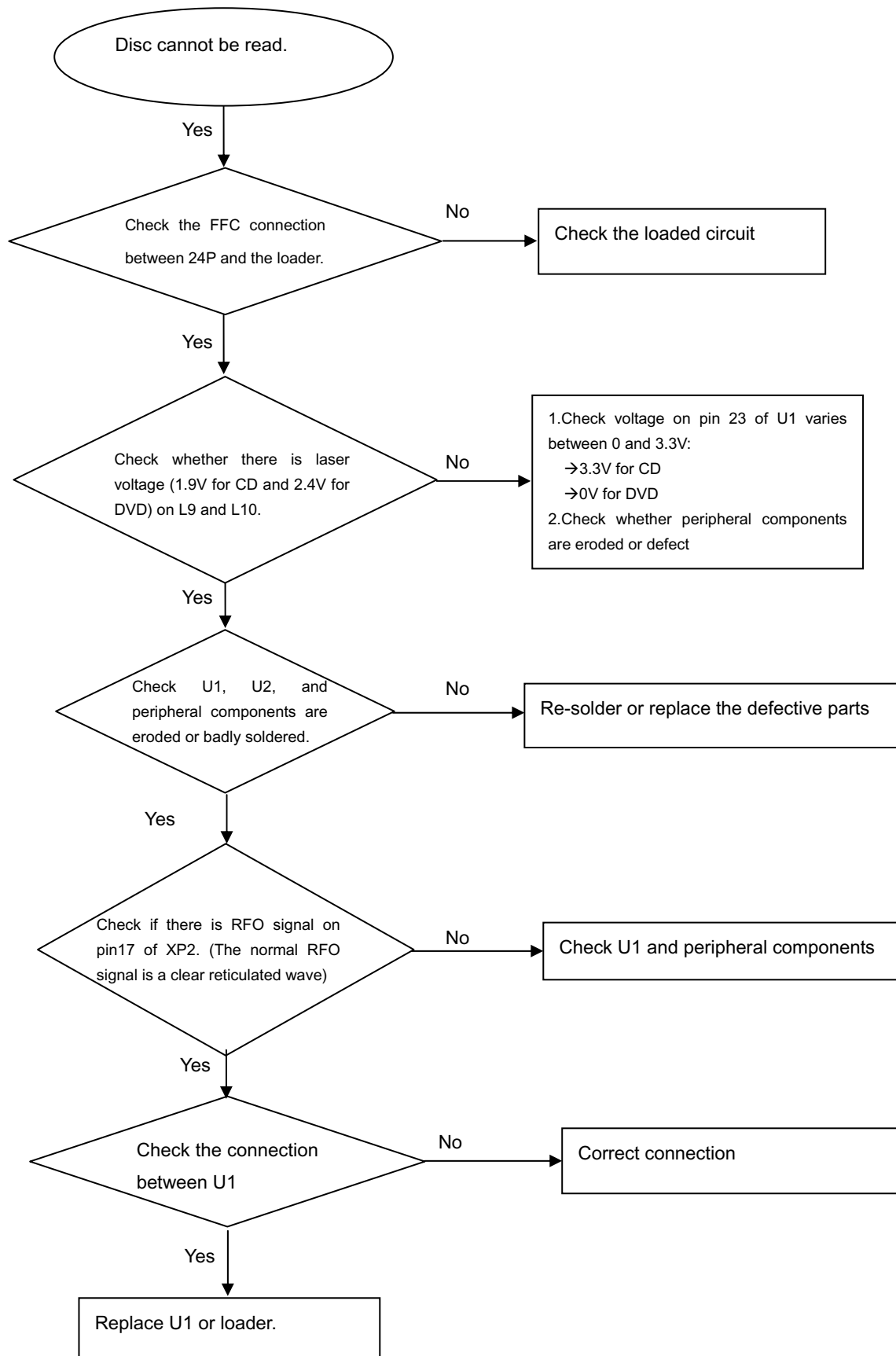
FOCUS_PWN waveform

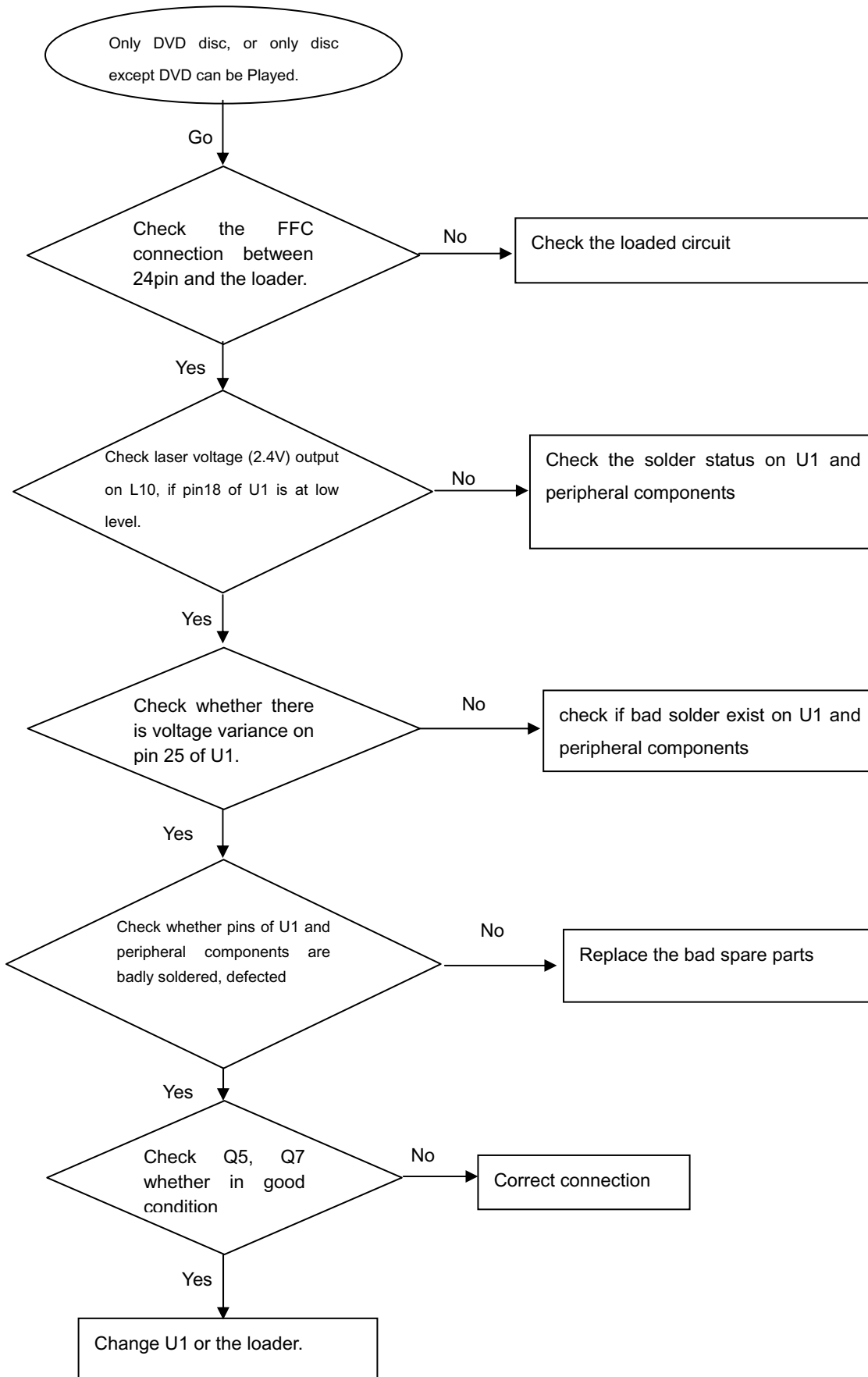


The power can not be on or off

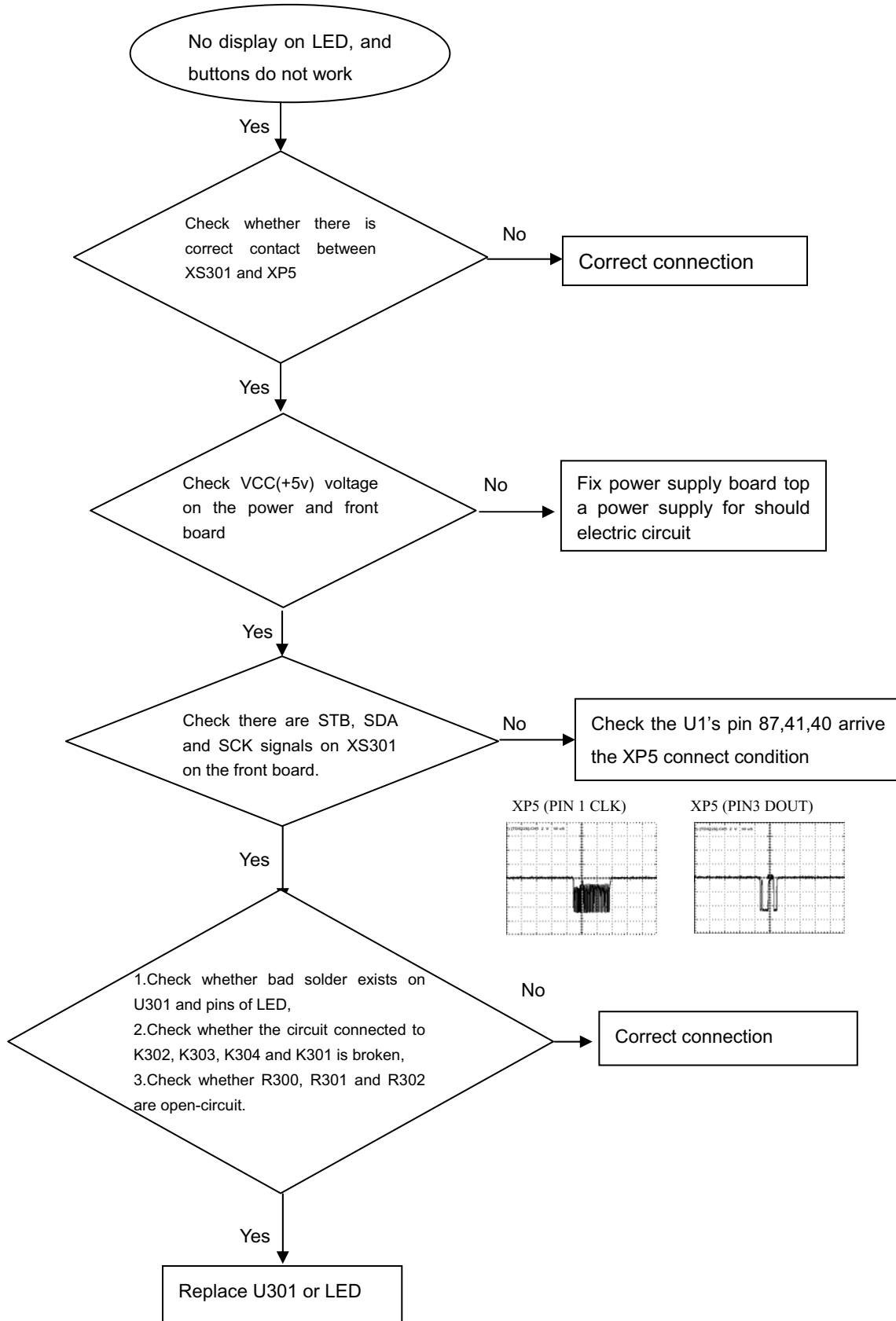
All output voltages on the power board is 0V or deviated.

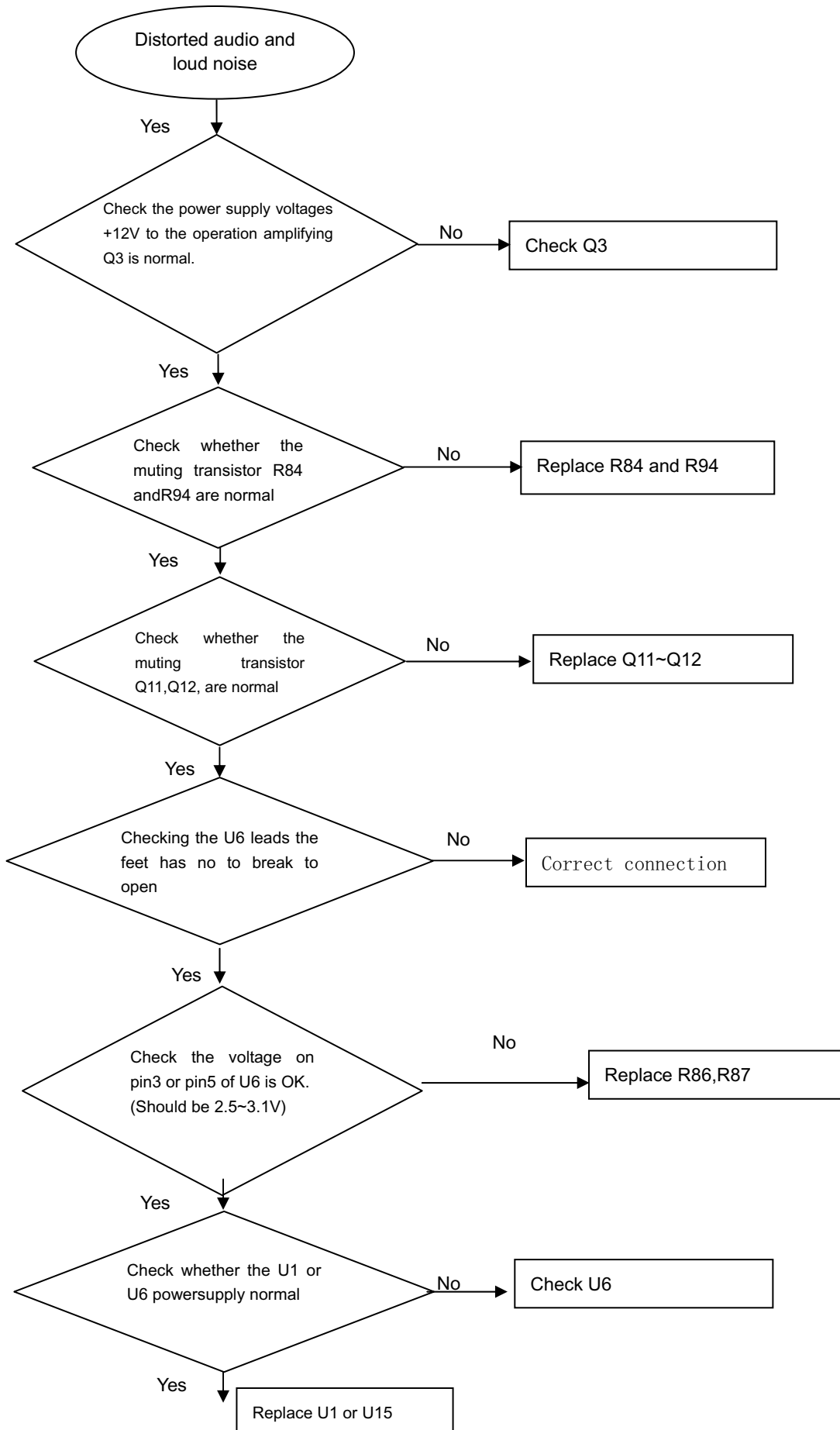


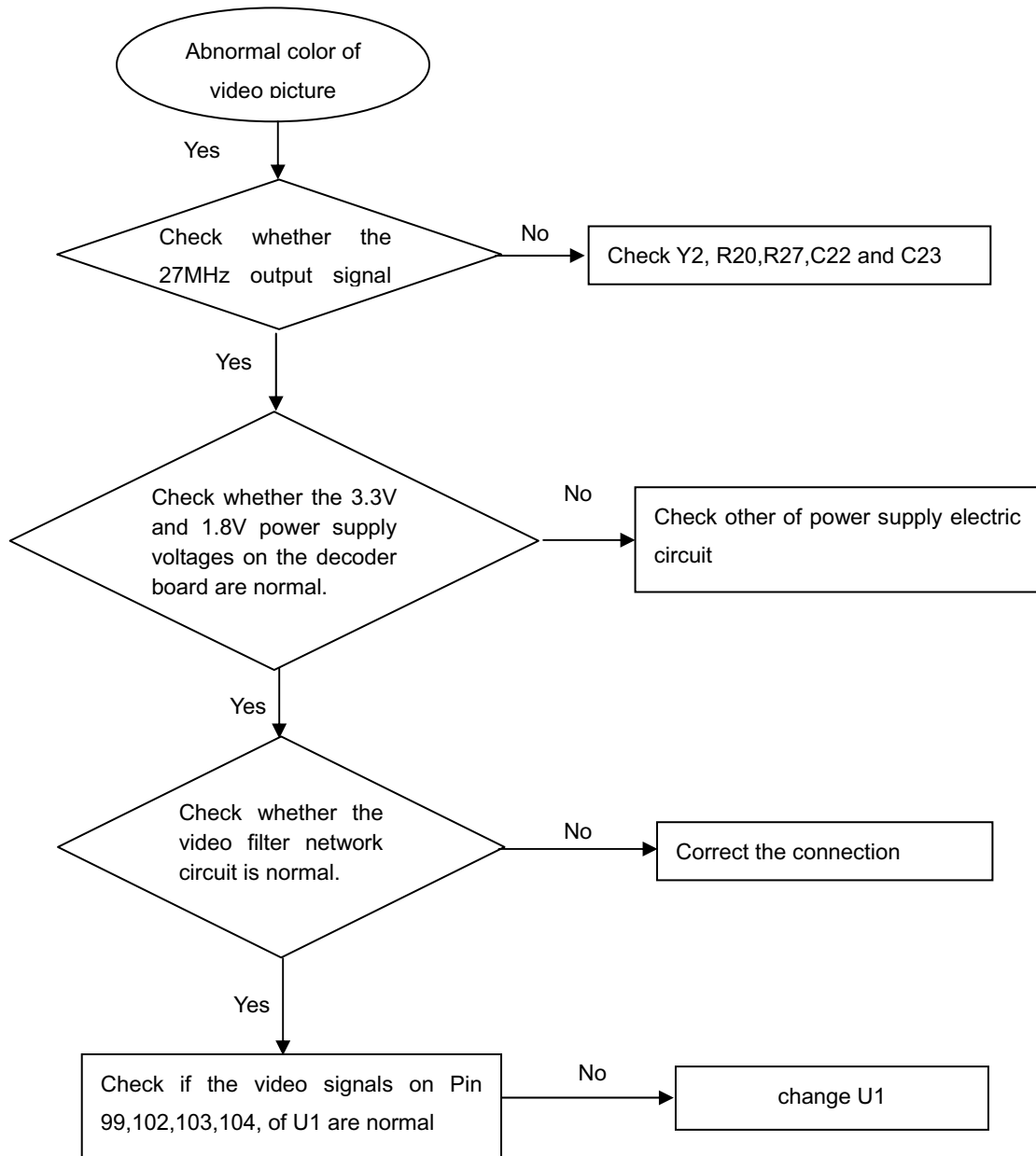
Disc cannot be read.

Only DVD disc or only disc except DVD can be played

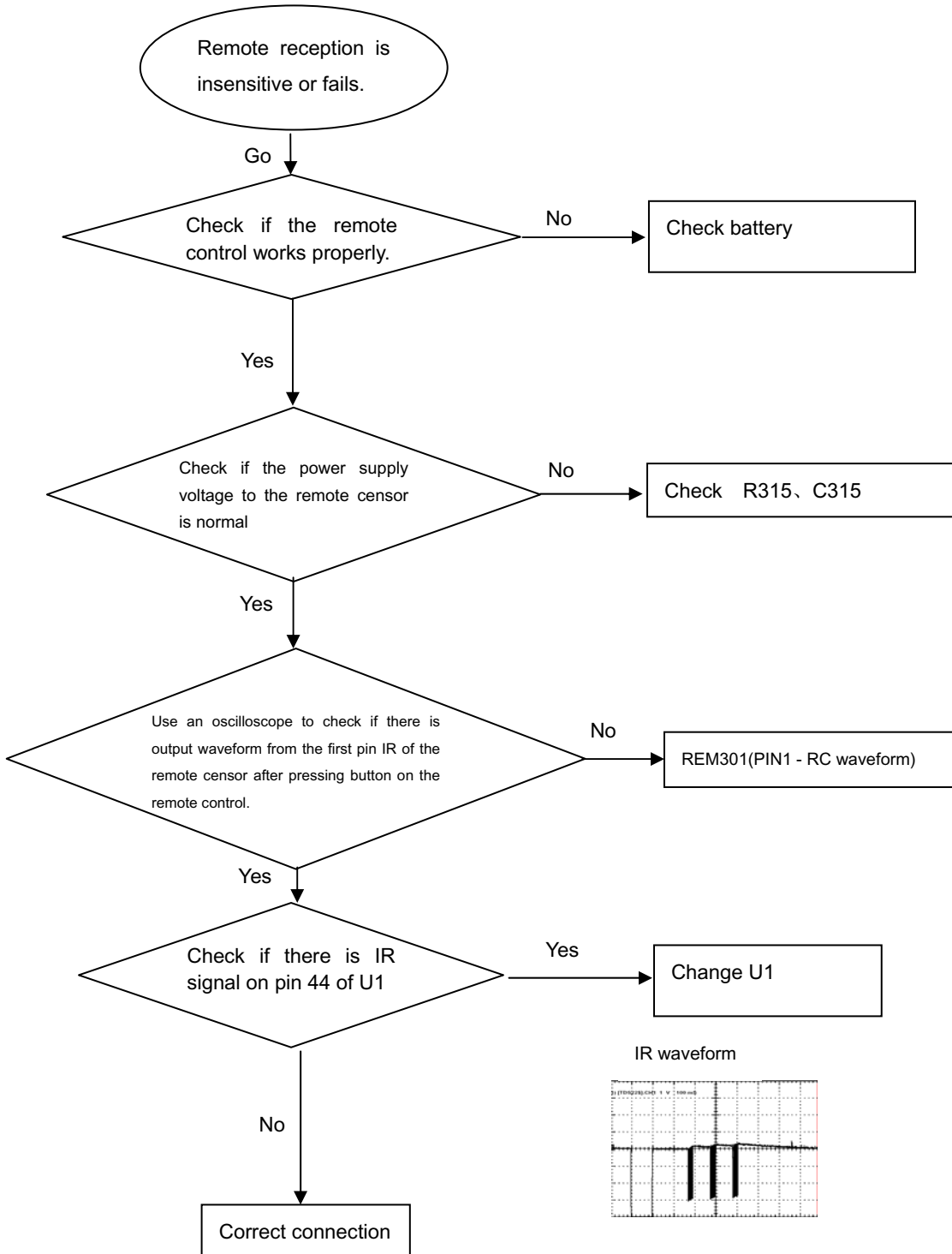
No display on LED, and buttons do not work



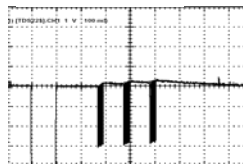
Distorted audio and loud noise

Abnormal color of video picture

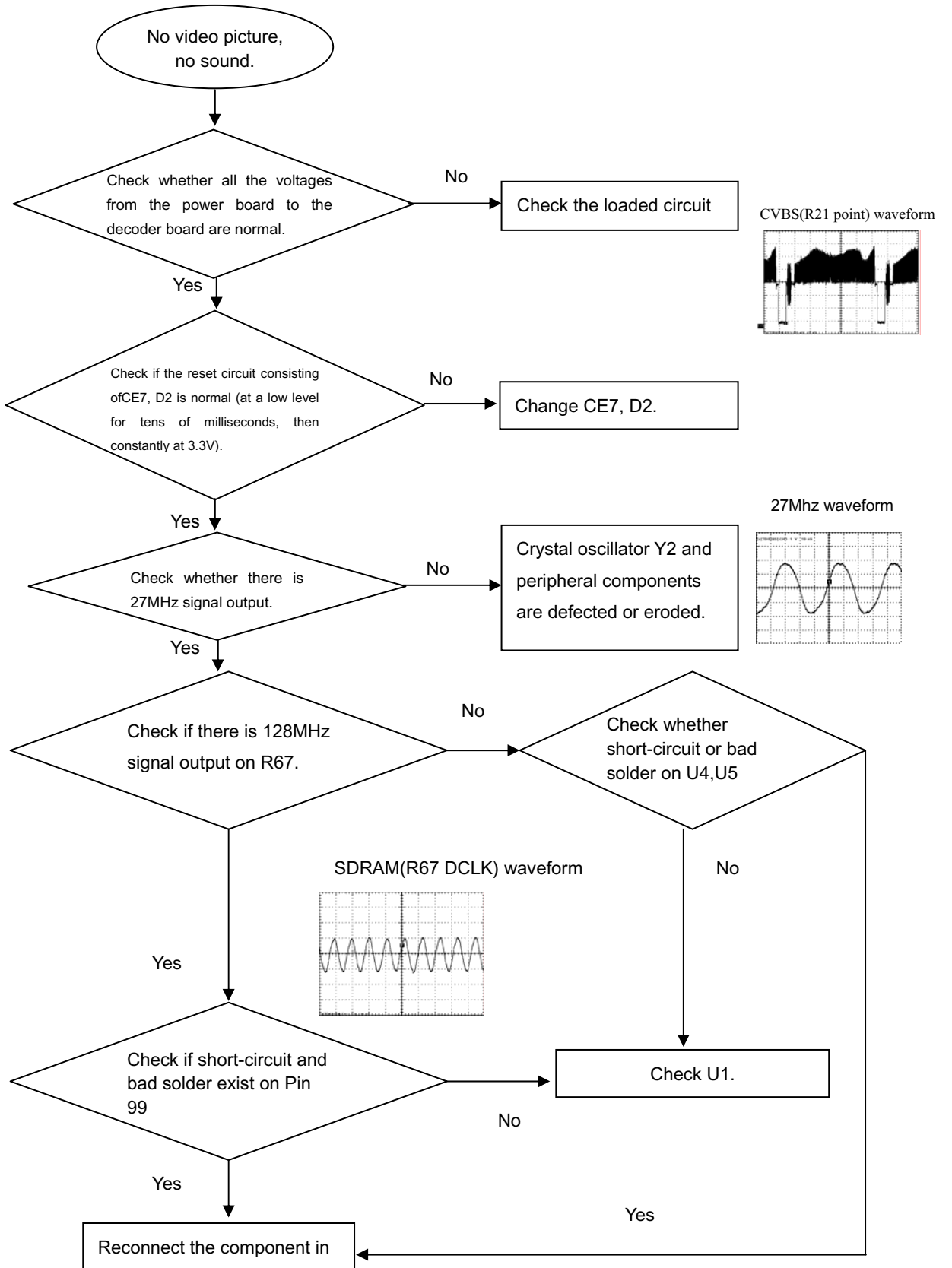
Remote reception is insensitive or fails.



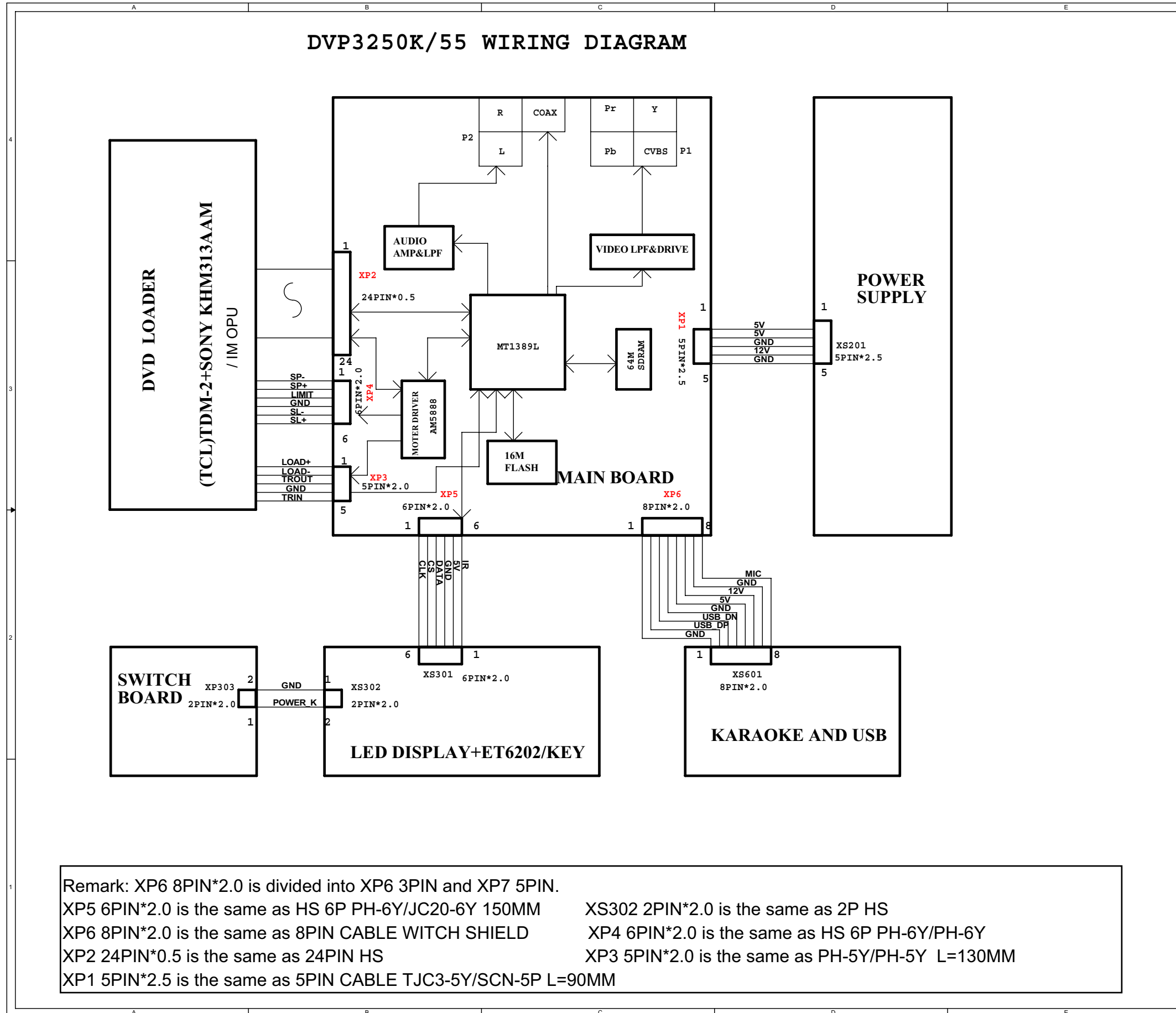
IR waveform



No video picture, no sound.



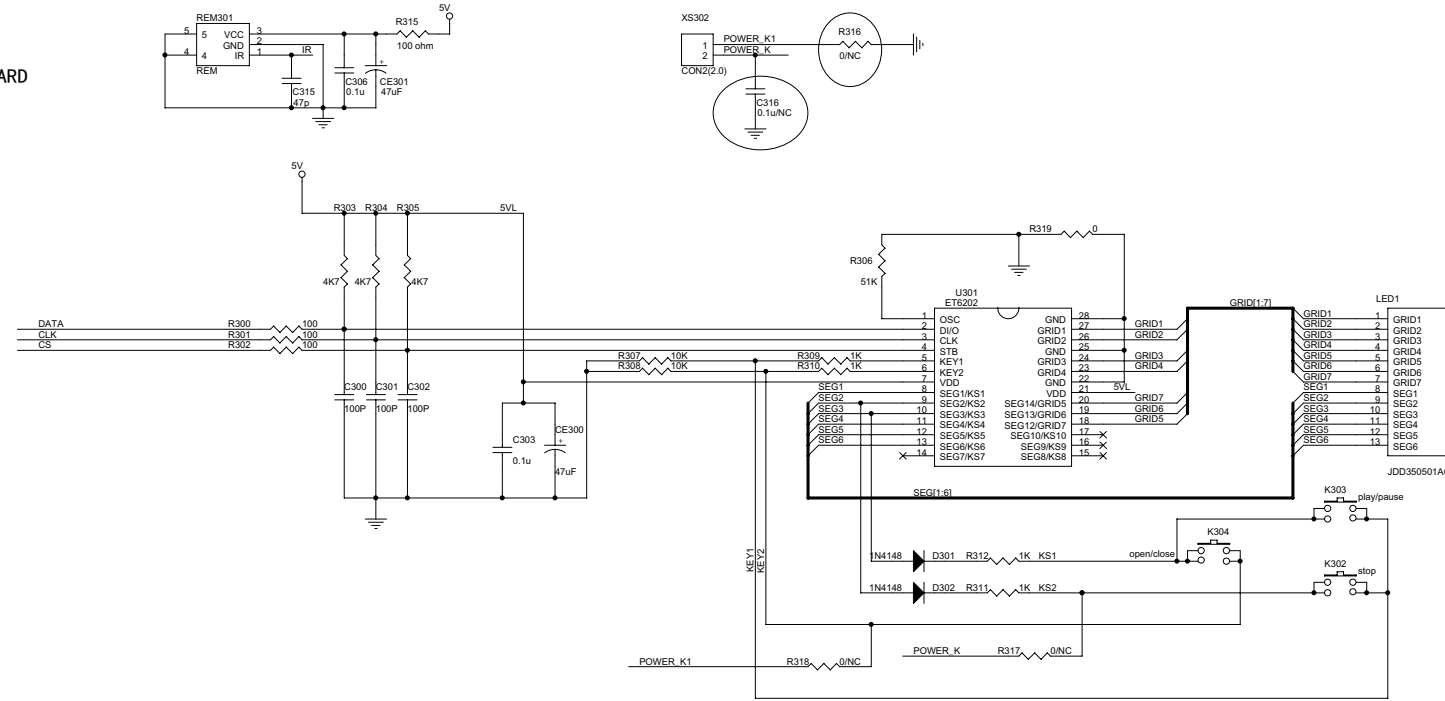
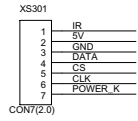
DVP3250K/55 WIRING DIAGRAM



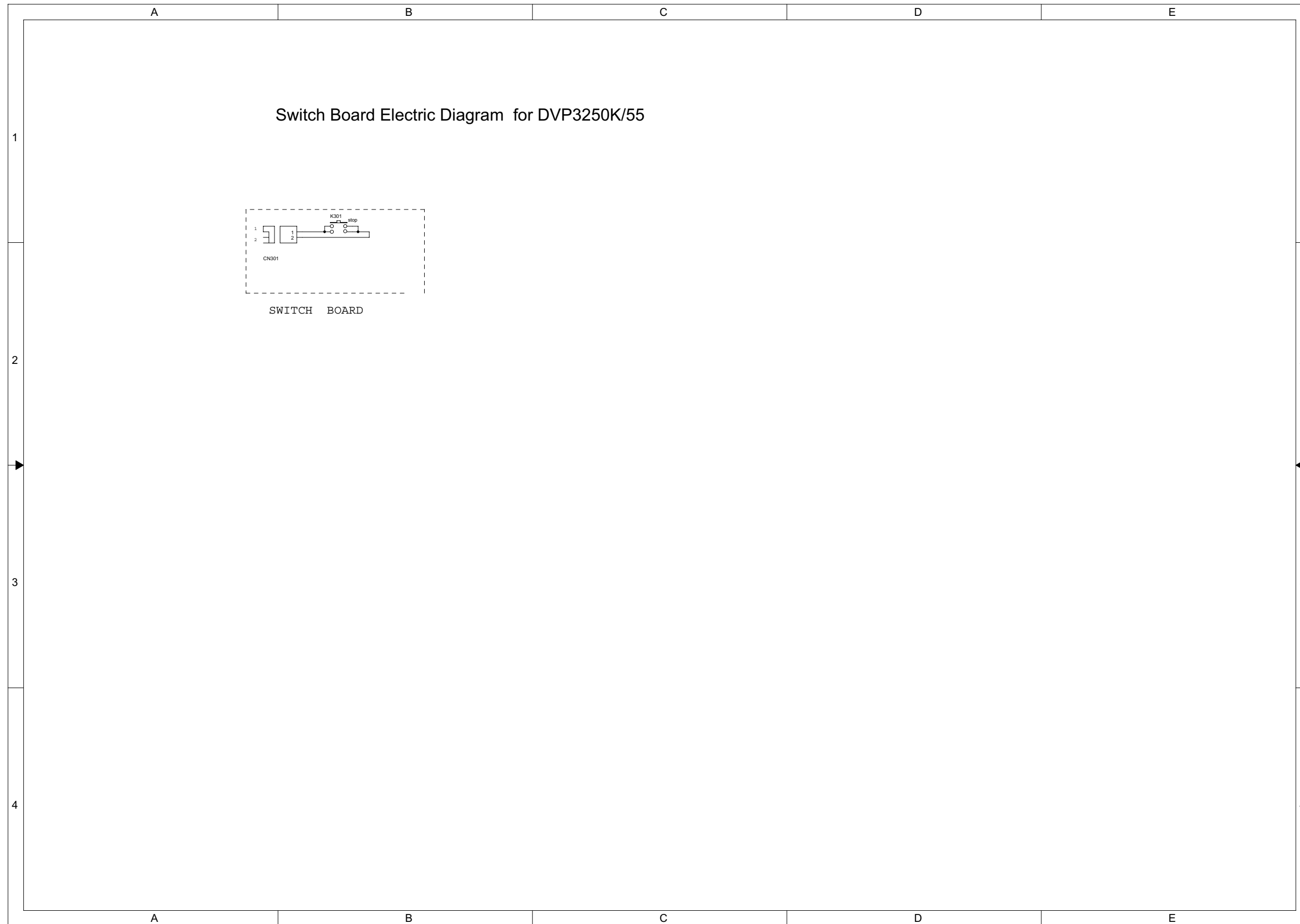
Remark: XP6 8PIN*2.0 is divided into XP6 3PIN and XP7 5PIN.
 XP5 6PIN*2.0 is the same as HS 6P PH-6Y/JC20-6Y 150MM
 XP6 8PIN*2.0 is the same as 8PIN CABLE WITCH SHIELD
 XP2 24PIN*0.5 is the same as 24PIN HS
 XP1 5PIN*2.5 is the same as 5PIN CABLE TJC3-5Y/SCN-5P L=90MM
 XS302 2PIN*2.0 is the same as 2P HS
 XP4 6PIN*2.0 is the same as HS 6P PH-6Y/PH-6Y
 XP3 5PIN*2.0 is the same as PH-5Y/PH-5Y L=130MM

Front Board Electric Diagram for DVP3250K/55

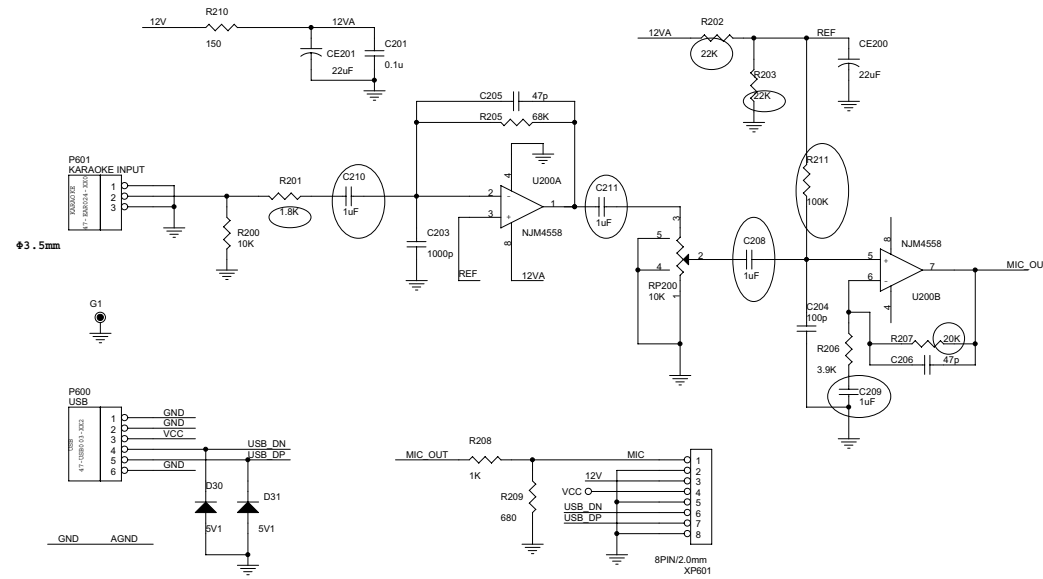
FROM MAIN BOARD



| | |
|--------|----|
| C300 | B2 |
| C301 | B2 |
| C302 | B2 |
| C303 | B2 |
| C306 | B1 |
| C315 | A1 |
| C316 | B1 |
| CE300 | B2 |
| CE301 | B1 |
| D301 | C2 |
| D302 | C2 |
| K302 | D2 |
| K303 | D2 |
| K304 | C2 |
| LED1 | D1 |
| R300 | A1 |
| R301 | A1 |
| R302 | A1 |
| R303 | B1 |
| R304 | B1 |
| R305 | B1 |
| R306 | C1 |
| R307 | B1 |
| R308 | B1 |
| R309 | B1 |
| R310 | B1 |
| R311 | C2 |
| R312 | C2 |
| R315 | B1 |
| R316 | C1 |
| R317 | C2 |
| R318 | B2 |
| R319 | C1 |
| REM301 | A1 |
| U301 | C1 |
| XS301 | A1 |
| XS302 | B1 |

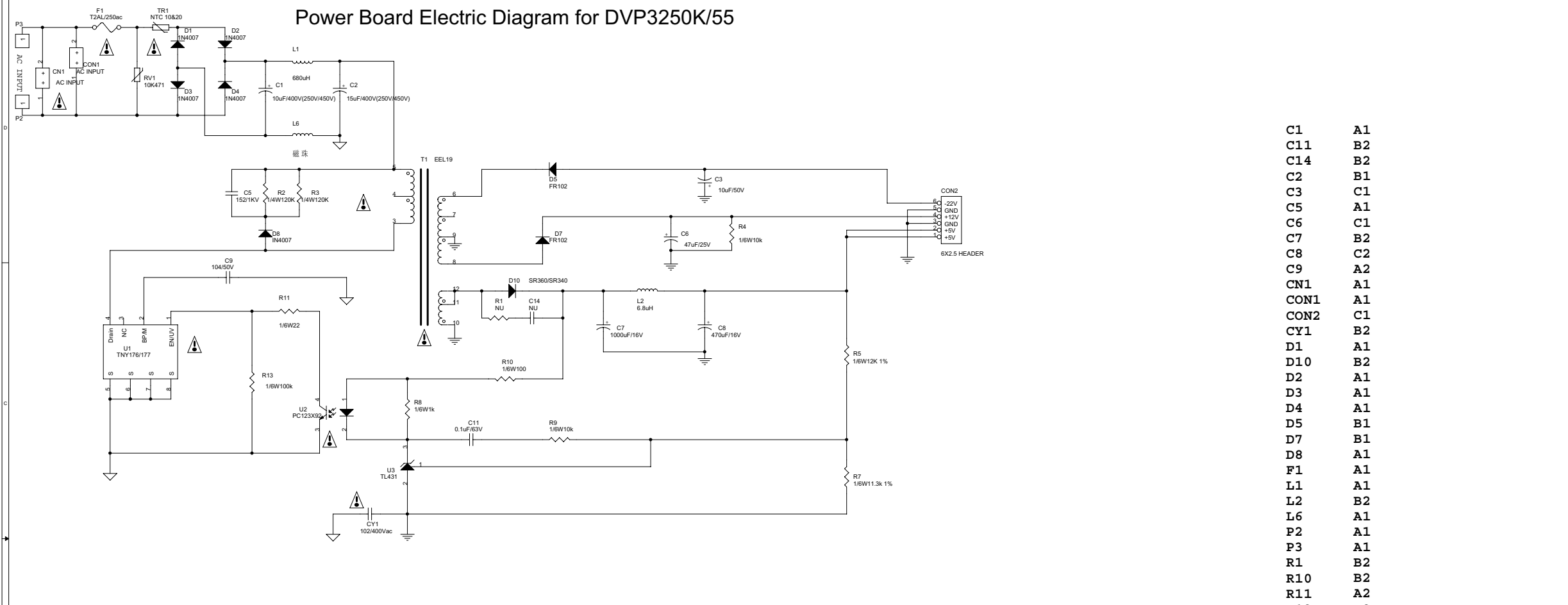


OK+USB+LED Board for DVP3250K/55:



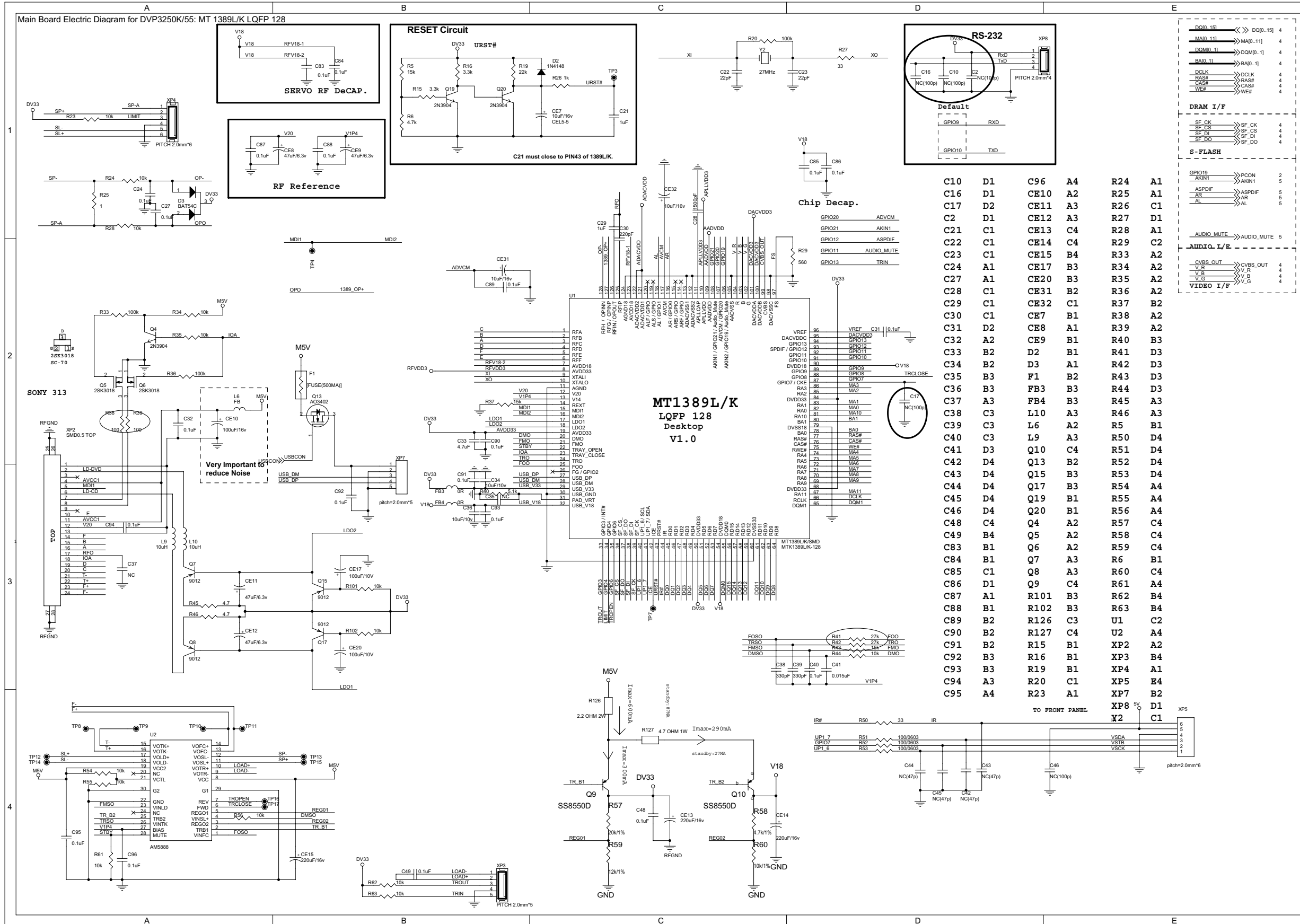
| | |
|-------|----|
| C201 | B1 |
| C203 | B2 |
| C204 | C2 |
| C205 | B1 |
| C206 | C2 |
| C208 | C2 |
| C209 | C2 |
| C210 | B2 |
| C211 | B2 |
| CE200 | C1 |
| CE201 | B1 |
| D30 | B2 |
| D31 | B2 |
| G1 | A2 |
| P600 | A2 |
| P601 | A2 |
| R200 | B2 |
| R201 | B2 |
| R202 | C1 |
| R203 | C1 |
| R205 | B1 |
| R206 | C2 |
| R207 | C2 |
| R208 | B2 |
| R209 | B2 |
| R210 | B1 |
| R211 | C2 |
| RP200 | B2 |
| U200A | B2 |
| U200B | C2 |
| XP601 | C2 |

Power Board Electric Diagram for DVP3250K/55

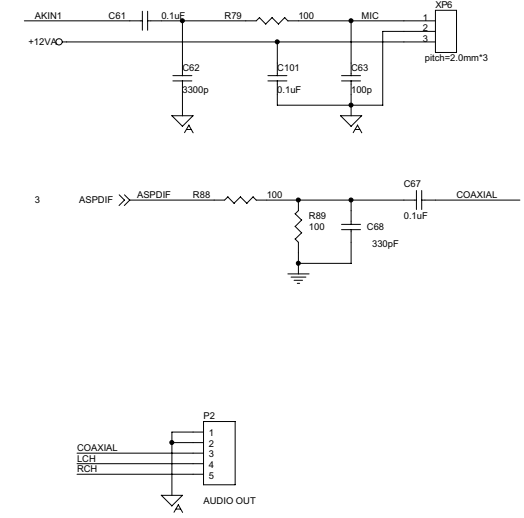
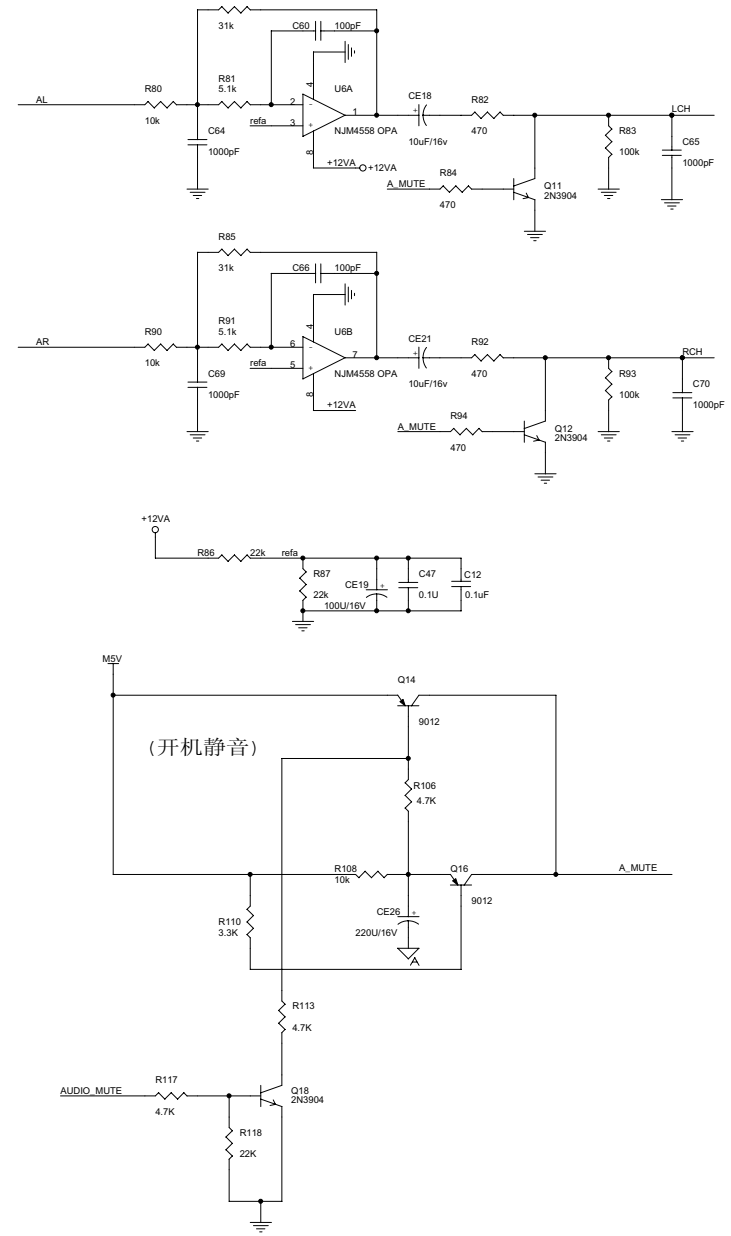


| | |
|-----|----|
| C1 | A1 |
| C11 | B2 |
| C14 | B2 |
| C2 | B1 |
| C3 | C1 |
| C5 | A1 |
| C6 | C1 |
| C7 | B2 |
| C8 | C2 |
| C9 | A2 |
| CN1 | A1 |
| CN1 | A1 |
| CN2 | C1 |
| CY1 | B2 |
| D1 | A1 |
| D10 | B2 |
| D2 | A1 |
| D3 | A1 |
| D4 | A1 |
| D5 | B1 |
| D7 | B1 |
| D8 | A1 |
| F1 | A1 |
| L1 | A1 |
| L2 | B2 |
| L6 | A1 |
| P2 | A1 |
| P3 | A1 |
| R1 | B2 |
| R10 | B2 |
| R11 | A2 |
| R13 | A2 |
| R2 | A1 |
| R3 | A1 |
| R4 | C1 |
| R5 | C2 |
| R7 | C2 |
| R8 | B2 |
| R9 | B2 |
| RV1 | A1 |
| T1 | B1 |
| TR1 | A1 |
| U1 | A2 |
| U2 | A2 |
| U3 | B2 |

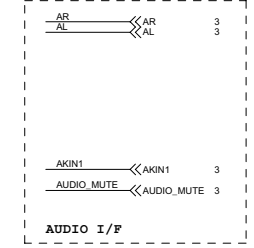
*** CAUTION :**
 THE PARTS MARKED WITH ARE IMPORTANT PARTS ON THE SAFETY.
 PLEASE USE THE PARTS HAVING THE DESIGNATED PARTS NUMBER WITHOUT FAIL.



Main Board Electric Diagram for DVP3250K/55: Audio I/F



| | |
|------|----|
| C101 | C1 |
| C12 | A2 |
| C47 | A2 |
| C60 | A1 |
| C62 | C1 |
| C63 | C1 |
| C64 | A1 |
| C65 | B1 |
| C66 | A1 |
| C67 | C1 |
| C68 | C1 |
| C69 | A1 |
| C70 | B1 |
| CE18 | A1 |
| CE19 | A2 |
| CE21 | A1 |
| CE26 | A3 |
| P2 | C2 |
| Q11 | B1 |
| Q12 | B2 |
| Q14 | A2 |
| Q16 | A3 |
| Q18 | A3 |
| R106 | A2 |
| R108 | A3 |
| R110 | A3 |
| R113 | A3 |
| R117 | A3 |
| R118 | A3 |
| R78 | A1 |
| R79 | C1 |
| R80 | A1 |
| R81 | A1 |
| R82 | A1 |
| R83 | B1 |
| R84 | A1 |
| R85 | A1 |
| R86 | A2 |
| R87 | A2 |
| R88 | C1 |
| R89 | C1 |
| R90 | A1 |
| R91 | A1 |
| R92 | A1 |
| R93 | B1 |
| R94 | A2 |
| U6A | A1 |
| U6B | A1 |
| XP6 | C1 |



1
2
3
4

1
2
3
4

COMMON1389L/K_KHM313_AM5888_V2 Desktop Model
 MT1389L/K (LQFP128) DVD TEST Board w/ Sony KHM Series PUHs

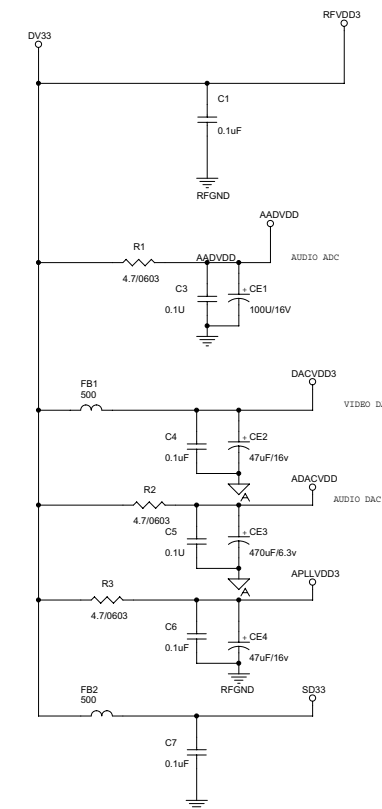
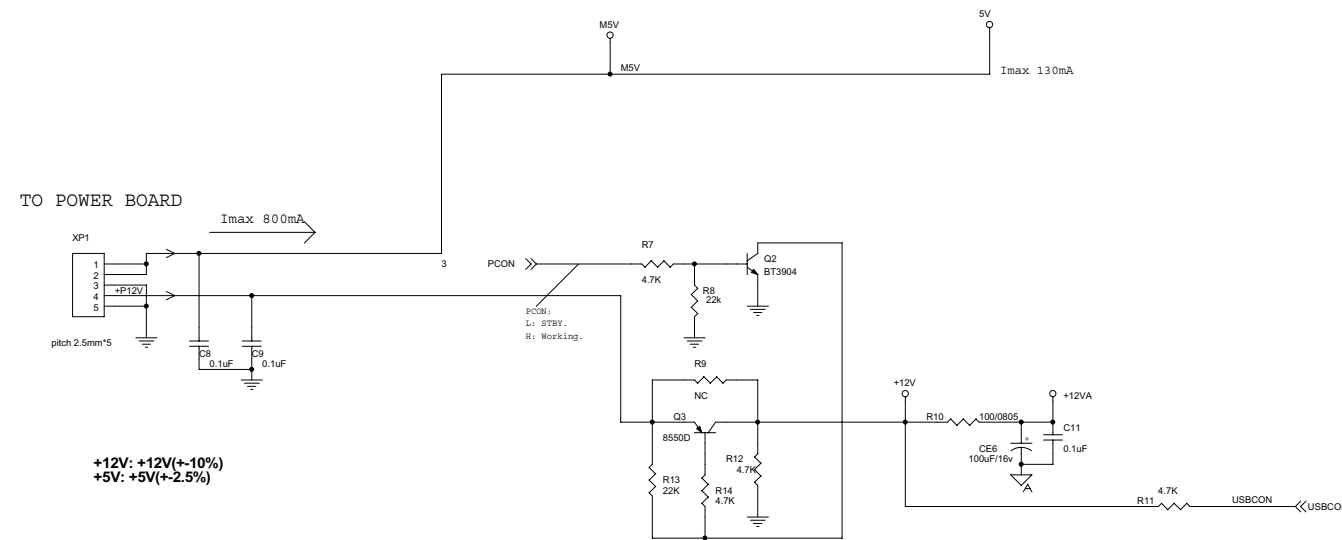
MT1389L/K Features Support List (MIC/USB Only for MT1389L)

| Item | Features |
|------|---|
| 1 | 5.1CH(only 2CH for 89K) + USB + VFD + AMUTE |
| 2 | |
| 3 | |
| 4 | |

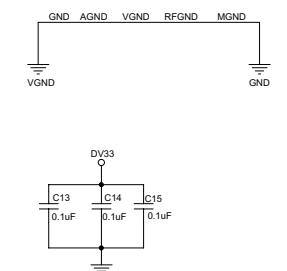
MT1389L/K General GPIO List

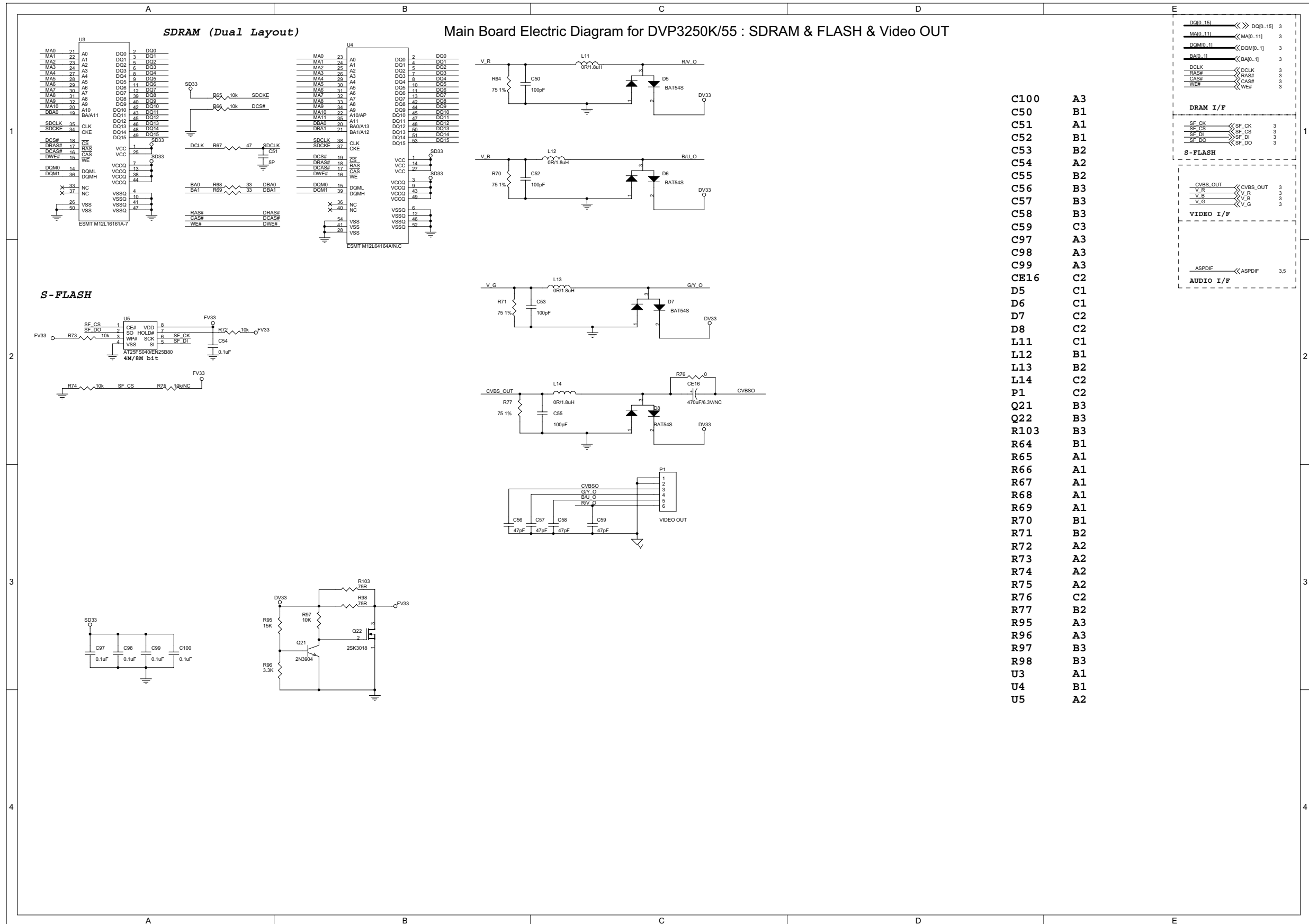
| Name | PIN | Features |
|--------|-----|--------------|
| GPIO3 | 33 | TROUT |
| GPIO4 | 34 | LIMIT |
| GPIO6 | 35 | TROPEN |
| GPIO7 | 87 | VSTB |
| GPO_A | 22 | STBY |
| GPO_B | 23 | IOA |
| GPIO2 | 26 | NC |
| GPIO8 | 88 | TRCLOSE |
| GPIO9 | 89 | RXD |
| GPIO10 | 91 | TXD |
| GPIO11 | 92 | AUDIO_MUTE |
| GPIO12 | 93 | ASPDIF |
| GPIO13 | 94 | TRIN |
| GPIO19 | 106 | PCON |
| GPIO20 | 107 | ADVCM |
| GPIO21 | 108 | AKIN1 |
| GPIOK0 | 27 | Only for 89K |
| GPIOK1 | 28 | Only for 89K |
| GPIOK2 | 31 | Only for 89K |

Main Board Electric Diagram for DVP3250K/55: Power

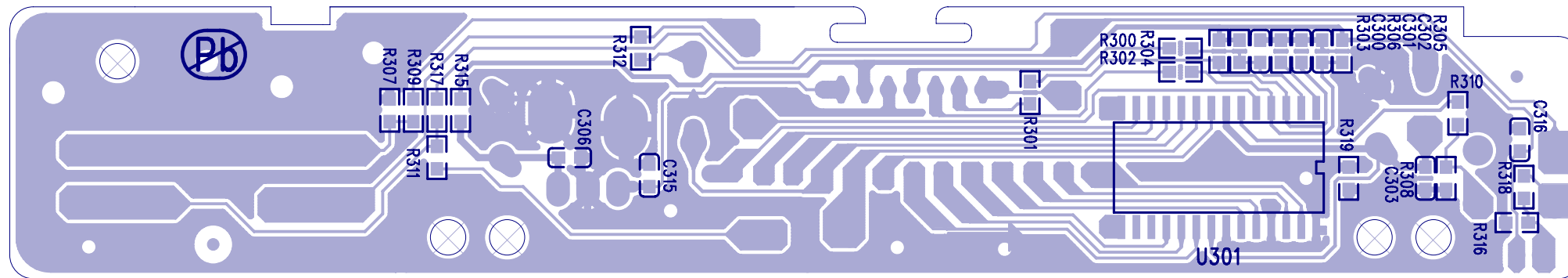


- C1 D1
- C11 C4
- C13 D4
- C14 D4
- C15 D4
- C3 D2
- C4 D2
- C5 D2
- C6 D2
- C7 D3
- C8 A3
- C9 A3
- CE1 D2
- CE2 D2
- CE3 D2
- CE4 D2
- CE6 C4
- FB1 D2
- FB2 D3
- Q2 B3
- Q3 B3
- R1 D2
- R10 B3
- R11 C4
- R12 B4
- R13 B4
- R14 B4
- R2 D2
- R3 D2
- R7 B3
- R8 B3
- R9 B3
- XP1 A3

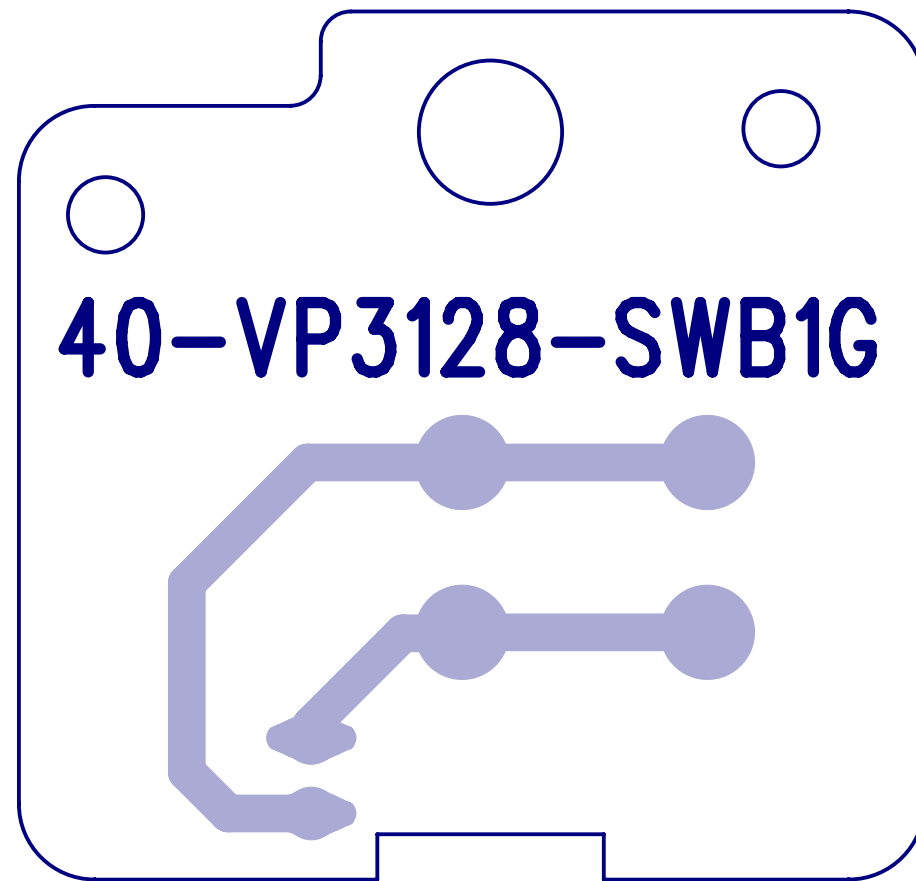




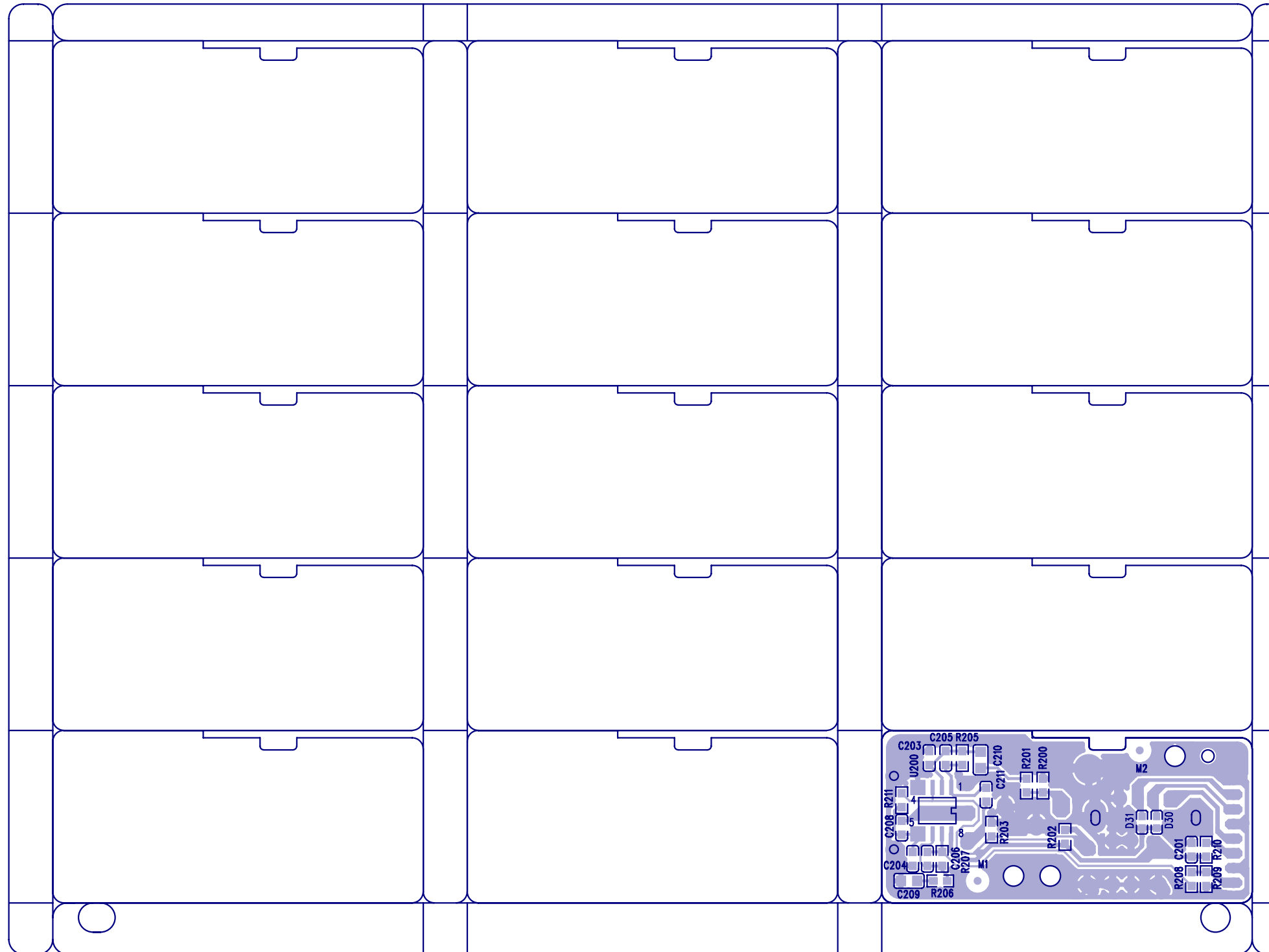
Front Board Print-layout (Bottom side) for DVP3250K/55



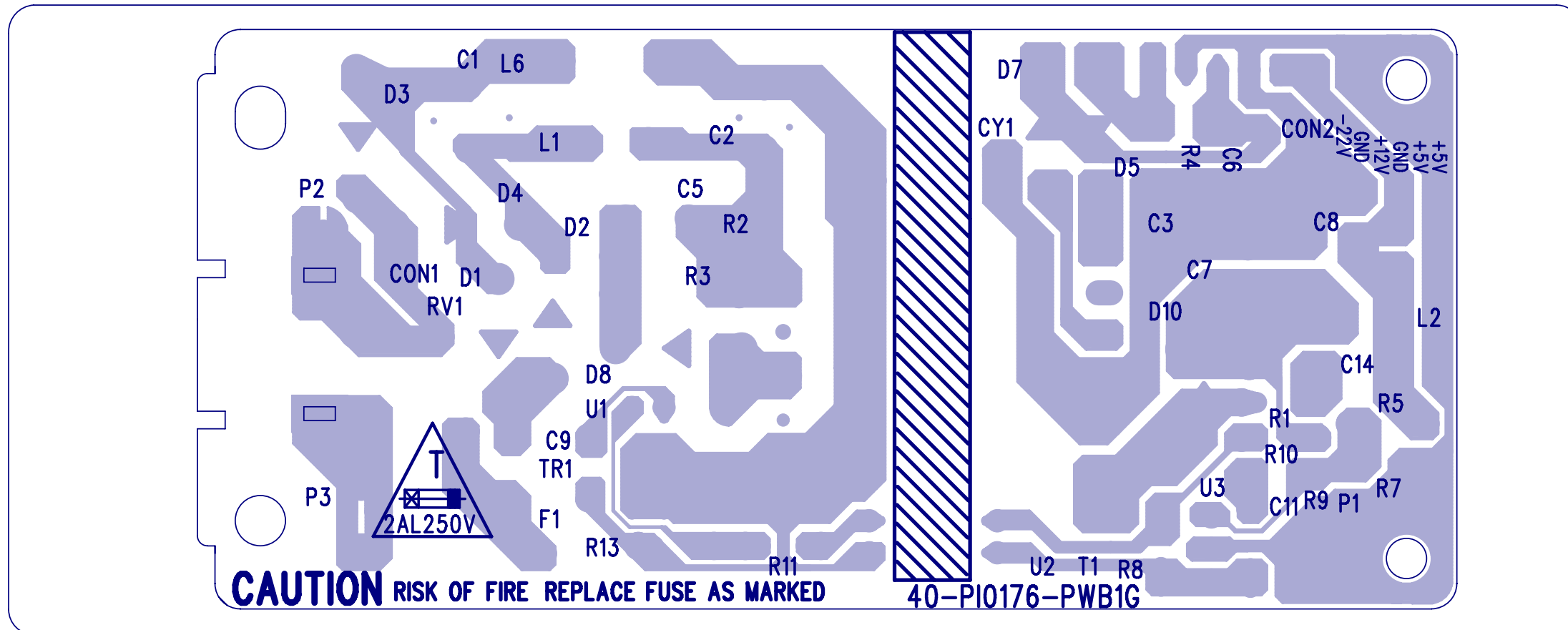
Switch Board Print-layout (Bottom side)for DVP3250K/55



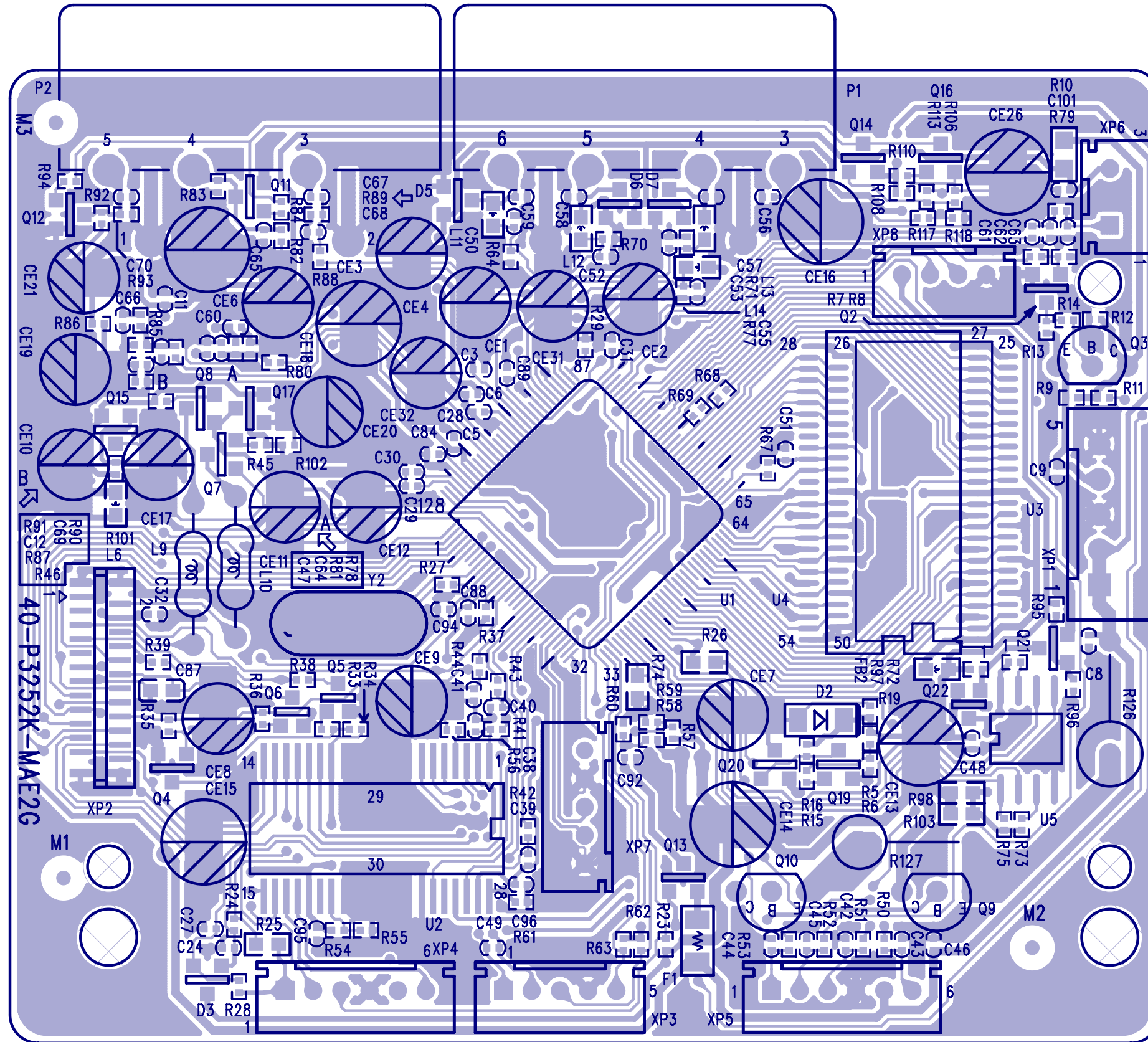
OK + USB Board Print-layout (Bottom side) for DVP3250K/55



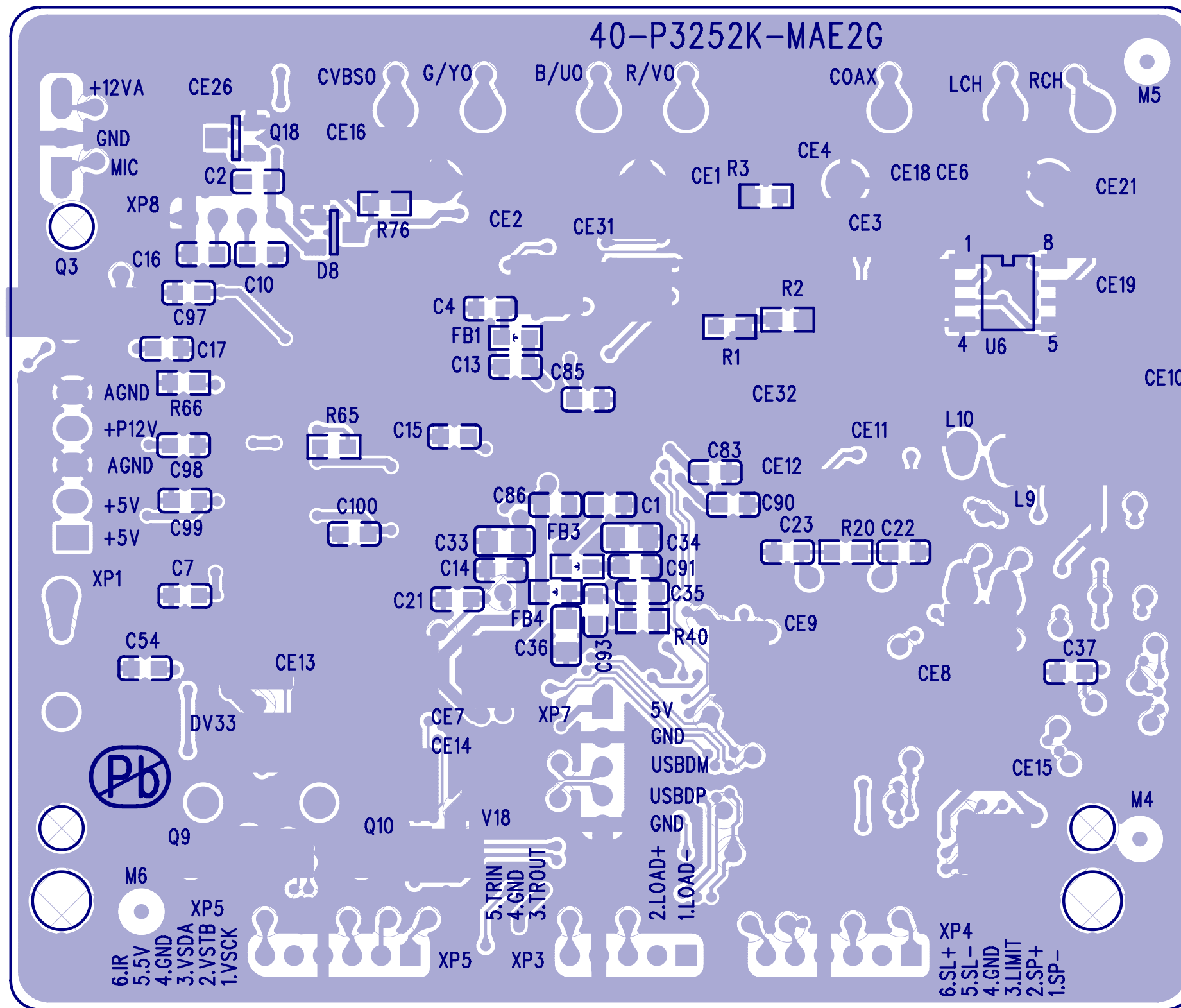
Power Board Print-layout (Bottom side) for DVP3250K/55



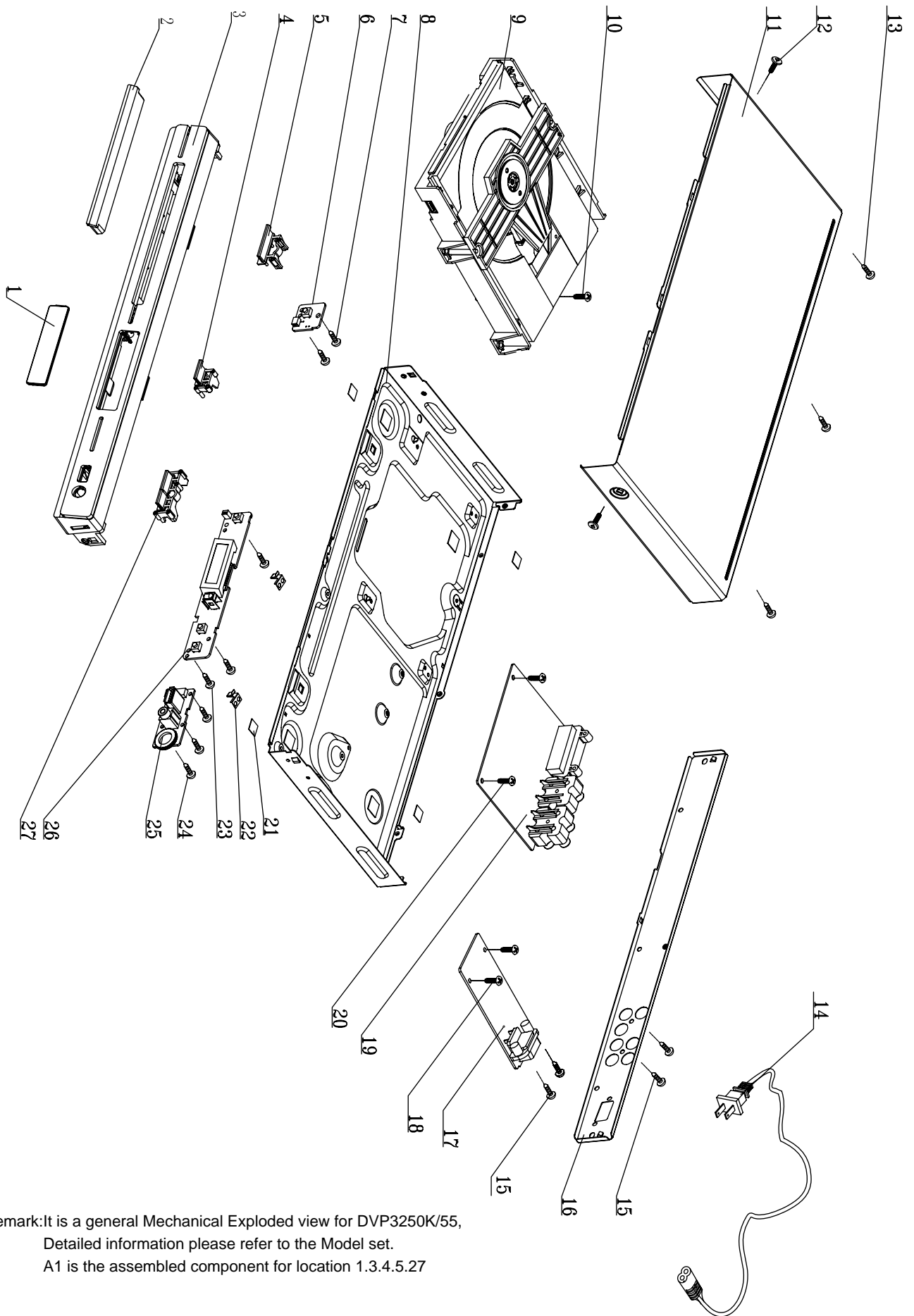
Main Board Print-layout (Top side) for DVP3250K/55



Main Board Print -layout (Bottom side) for DVP3250K/55



Exploded View for DVP3250K/55:



Remark: It is a general Mechanical Exploded view for DVP3250K/55,
Detailed information please refer to the Model set.
A1 is the assembled component for location 1.3.4.5.27

Electrical PARTS LIST

| No | 12NC No. | Part Name | Q'ty |
|-----------|---------------------|--------------------------------|----------|
| 17 | 996510010952 | ASSY- PW BD | 1 |
| D1 | 996510011047 | DIODE IN4007 | 1 |
| D8 | 996510011047 | DIODE IN4007 | 1 |
| D4 | 996510011047 | DIODE IN4007 | 1 |
| D3 | 996510011047 | DIODE IN4007 | 1 |
| D2 | 996510011047 | DIODE IN4007 | 1 |
| D10 | 996500027866 | DIODE SR360 3A/60V | 1 |
| D7 | 996500014043 | DIODE FR102 (FAST RECOVERY) | 1 |
| F1 | 996510001780 | FUSE 2A 250V 5X20MM | 1 |
| L1 | 996510009942 | COIL WIDTH | 1 |
| L2 | 996500032509 | COIL SL0811-6R8K2R4 | 1 |
| T1 | 996510010954 | TRANSFORMER CONV | 1 |
| U1 | 996510010953 | IC TNY176PN | 1 |
| U2 | 996500027867 | PHOTOCOUPLER PS2561L1-1-V(WF) | 1 |
| U3 | 996510009661 | adjustable shunt regulator | 1 |
| 19 | 996510018201 | ASSY- MAIN BD | 1 |
| D2 | 996510009667 | SMD. SWITCHING DIODE LL4148 | 1 |
| D3 | 996510009668 | BAT54C | 1 |
| D5 | 996510009859 | SCHOTTKY DIODES BAT54S SOP-23 | 1 |
| D8 | 996510009859 | SCHOTTKY DIODES BAT54S SOP-23 | 1 |
| D7 | 996510009859 | SCHOTTKY DIODES BAT54S SOP-23 | 1 |
| D6 | 996510009859 | SCHOTTKY DIODES BAT54S SOP-23 | 1 |
| L10 | 996500014082 | COIL CHOKE 10UH +/-10% | 1 |
| L9 | 996500014082 | COIL CHOKE 10UH +/-10% | 1 |
| Q10 | 996510009671 | TRANSISTOR | 1 |
| Q9 | 996510009671 | TRANSISTOR | 1 |
| Q3 | 996510009671 | TRANSISTOR | 1 |
| Q11 | 996510009669 | SMD.TRANSISTOR MMBT3904LT1 NPN | 1 |
| Q4 | 996510009669 | SMD.TRANSISTOR MMBT3904LT1 NPN | 1 |
| Q20 | 996510009669 | SMD.TRANSISTOR MMBT3904LT1 NPN | 1 |
| Q20 | 996510009669 | SMD.TRANSISTOR MMBT3904LT1 NPN | 1 |
| Q19 | 996510009669 | SMD.TRANSISTOR MMBT3904LT1 NPN | 1 |
| Q18 | 996510009669 | SMD.TRANSISTOR MMBT3904LT1 NPN | 1 |
| Q12 | 996510009669 | SMD.TRANSISTOR MMBT3904LT1 NPN | 1 |
| Q13 | 996510010949 | MOSFET AO3402 | 1 |
| Q14 | 996510009670 | TRANSISTOR SMT 3CG9012M | 1 |
| Q8 | 996510009670 | TRANSISTOR SMT 3CG9012M | 1 |
| Q7 | 996510009670 | TRANSISTOR SMT 3CG9012M | 1 |
| Q17 | 996510009670 | TRANSISTOR SMT 3CG9012M | 1 |
| Q16 | 996510009670 | TRANSISTOR SMT 3CG9012M | 1 |
| Q15 | 996510009670 | TRANSISTOR SMT 3CG9012M | 1 |
| Q5 | 996510009769 | N Channel MOSFET 2SK3108 | 1 |
| Q6 | 996510009769 | N Channel MOSFET 2SK3108 | 1 |
| U1 | 996510010950 | IC MT1389DE/L | 1 |
| U2 | 996510009674 | IC AM5888IC | 1 |
| U4 | 996510009863 | 64M SDRAM TSOP54 M12L64164A-7T | 1 |
| U5 | 996510010951 | 16M FLASH | 1 |
| U6 | 996500032494 | IC AS4558M | 1 |
| Y2 | 996510009675 | 27MCL20PF | 1 |
| 25 | 996510010958 | KU BD | 1 |
| U200 | 996500032494 | IC AS4558M | 1 |
| 26 | 996510010956 | ASSY- FB BD | 1 |
| LED1 | 996510010957 | LED | 1 |
| REM301 | 996510010903 | IR RECEIVER MODULE 14MM 5V | 1 |
| U301 | 996510009665 | IC ET6202 SOP-2 | 1 |
| 6 | 996510010955 | ASSY- SW BD | 1 |
| 9 | 996510018202 | DVD LOADER | 1 |
| OPU | 996510018183 | IM OPU | 1 |

MECHANICAL & ACCESSORIES PARTS LIST

| No | 12NC No. | Part Name | Q'ty |
|--------------------|---------------------|---------------------------------------|----------|
| 11 | 996510007452 | TOP COVER | 1 |
| 14 | 996510001175 | POWER CORD | 1 |
| 16 | 996510010965 | BACK PANEL | 1 |
| 2 | 996510020886 | FRONT DOOR | 1 |
| 21 | 996510006463 | PAD | 4 |
| 8 | 996510010966 | BOTTOM CABINET | 1 |
| 9 | 996510018202 | DVD LOADER | 1 |
| ASSY1 | 996510020884 | ASSY - FRONT CABINET | 1 |
| AVCable | 996510001106 | VIDEO CABLE 1500mm | 1 |
| Dbox | 996510020883 | Display BOX | 1 |
| POWERSOCKET | 996510020885 | POWER SOCKET transition | 1 |
| RC | 996510010959 | REMOTE CONTROL | 1 |
| XP1 | 996510010962 | 5PIN CBL TJC3-5Y/SCN-5P L=90MM | 1 |
| XP2 | 996510012752 | 24PIN HS | 1 |
| XP3 | 996510004063 | CABLE PH-5Y/PH-5Y L=130MM | 1 |
| XP4 | 996510001222 | HS 6P PH-6Y/PH-6Y | 1 |
| XP5 | 996510012698 | HS 6P PH-6Y/JC20-6Y 150MM | 1 |
| XP6 | 996510010961 | 8PIN CABLE WITCH SHIELD | 1 |
| XS302 | 996510004064 | CABLE 2P HS L=160MM | 1 |

Screws List:

| No | Reference No. | Part Name | Q'ty |
|----|---------------|----------------------------|------|
| 7 | — | S/T SCREW B 2.6 X 8 BF | 2 |
| 10 | — | MACHINE SCREW (B3*7) | 1 |
| 12 | — | M/C SCREW TRIANGLE W 3 X 6 | 3 |
| 13 | — | TRIANGLE M/C SCREW B 3 X 6 | 2 |
| 15 | — | S/T SCREW B 3 X 8 BF | 4 |
| 18 | — | TRIANGLE M/C SCREW B 3 X 6 | 2 |
| 20 | — | TRIANGLE M/C SCREW B 3 X 6 | 2 |
| 23 | — | S/T SCREW B 2.6 X 8 BF | 3 |
| 24 | — | S/T SCREW B 2.6 X 8 BF | 3 |

REVISION LIST

Version 1.0

* Initial release for DVP3250K/55

Version 1.1

* Updating Part List